

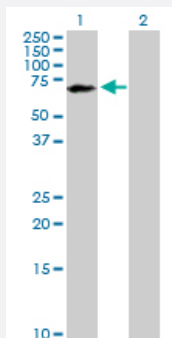
MaxPab®

PPM1B purified MaxPab rabbit polyclonal antibody (D01P)

Catalog # H00005495-D01P

Size 100 ug

Applications

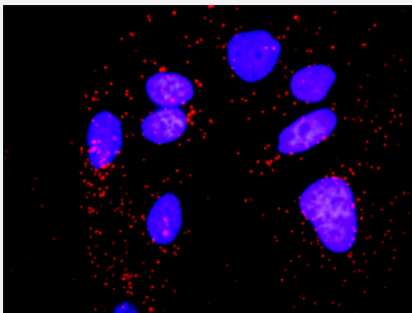


Western Blot (Transfected lysate)

Western Blot analysis of PPM1B expression in transfected 293T cell line ([H00005495-T01](#)) by PPM1B MaxPab polyclonal antibody.

Lane 1: PPM1B transfected lysate(52.60 KDa).

Lane 2: Non-transfected lysate.



In situ Proximity Ligation Assay (Cell)

Proximity Ligation Analysis of protein-protein interactions between PPM1B and CHUK. HeLa cells were stained with anti-PPM1B rabbit purified polyclonal 1:1200 and anti-CHUK mouse monoclonal antibody 1:50. Each red dot represents the detection of protein-protein interaction complex, and nuclei were counterstained with DAPI (blue).

Specification

Product Description

Rabbit polyclonal antibody raised against a full-length human PPM1B protein.

Immunogen

PPM1B (NP_002697.1, 1 a.a. ~ 479 a.a) full-length human protein.

Sequence

MGAFLDKPKTEKHNAHGAGNGLRYGLSSMQGWRVEMEDAHTAVVGIPHGLEDWSFFAVYDGH
AGSRVANYCSTHLLHITTNEFDRAAGKSGSALELSVENVKNGIRTGFLKIDYMRNFSDLRNGMD
RSGSTAVGVMISPKHIYFINCDSRAVLVRNGQVCFSTQDHPKPCNPKEKERIQNAGGSVMIQRVN
GSLAVSRALGDYDYKCVDPGKPTQLVSPEPEVYEILRAEEDFIIACDGMWVMSNEELCEYVK
SRLEVSDDLENVCNWWVDTCLHKGSRDNMSMLVCFSNAPKVSDEAVKKDSELDKHLESRVEEI
MEKSGEEGMPDLAHVMRILSAENIPNLPPGGGLAGKRNVEAVYSRLNPHRES DGASDEAEESG
SQGKLVEALRQMRINHRGNYRQLLEMLTSYRLAKVEGEESPAEPAATATSSNSDAGNPVTMQE
SHTESESGLAELDSSNEDAGTKMSGEKI

Host	Rabbit
Reactivity	Human
Quality Control Testing	Antibody reactive against mammalian transfected lysate.
Storage Buffer	In 1x PBS, pH 7.4
Storage Instruction	Store at -20°C or lower. Aliquot to avoid repeated freezing and thawing.

Applications

- Western Blot (Transfected lysate)

Western Blot analysis of PPM1B expression in transfected 293T cell line ([H00005495-T01](#)) by PPM1B MaxPab polyclonal antibody.

Lane 1: PPM1B transfected lysate(52.60 KDa).

Lane 2: Non-transfected lysate.

[Protocol Download](#)

- In situ* Proximity Ligation Assay (Cell)

Proximity Ligation Analysis of protein-protein interactions between PPM1B and CHUK. HeLa cells were stained with anti-PPM1B rabbit purified polyclonal 1:1200 and anti-CHUK mouse monoclonal antibody 1:50. Each red dot represents the detection of protein-protein interaction complex, and nuclei were counterstained with DAPI (blue).

Gene Info — PPM1B

Entrez GeneID	5495
GeneBank Accession#	NM_002706.4
Protein Accession#	NP_002697.1
Gene Name	PPM1B
Gene Alias	MGC21657, PP2C-beta-X, PP2CB, PP2CBETA, PPC2BETAX
Gene Description	protein phosphatase 1B (formerly 2C), magnesium-dependent, beta isoform
Omim ID	603770
Gene Ontology	Hyperlink

Gene Summary

The protein encoded by this gene is a member of the PP2C family of Ser/Thr protein phosphatases. PP2C family members are known to be negative regulators of cell stress response pathways. This phosphatase has been shown to dephosphorylate cyclin-dependent kinases (CDKs), and thus may be involved in cell cycle control. Overexpression of this phosphatase is reported to cause cell-growth arrest or cell death. Alternative splicing results in multiple transcript variants encoding different isoforms. Additional transcript variants have been described, but currently do not represent full-length sequences. [provided by RefSeq]

Other Designations

OTTHUMP00000158953|OTTHUMP00000158955|protein phosphatase 1B|protein phosphatase 2C beta isoform|protein phosphatase 2C-like protein

Pathway

- [MAPK signaling pathway](#)

Disease

- [Tobacco Use Disorder](#)