

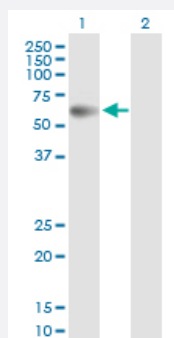
MaxPab®

## PPM1B purified MaxPab mouse polyclonal antibody (B01P)

Catalog # H00005495-B01P

Size 50 ug

### Applications



#### Western Blot (Transfected lysate)

Western Blot analysis of PPM1B expression in transfected 293T cell line ([H00005495-T01](#)) by PPM1B MaxPab polyclonal antibody.

Lane 1: PPM1B transfected lysate(52.69 KDa).

Lane 2: Non-transfected lysate.

### Specification

#### Product Description

Mouse polyclonal antibody raised against a full-length human PPM1B protein.

#### Immunogen

PPM1B (NP\_002697.1, 1 a.a. ~ 479 a.a) full-length human protein.

#### Sequence

MGAFLDKPKTEKHNAHGAGNGLRYGLSSMQGWRVEMEDAHTAVVGIPHGLEDWSFFAVYDGH  
AGSRVANYCSTHLLHITTNEFDRAAGKSGSALELSVENVKNGIRTGFLKIDEYMRNFSDLRNGMD  
RSGSTAVGVMISPKHYFINCGDSRAVLYRNGQVCFSTQDHPKPCNPREKERIQNAGGSVMIQVRN  
GSLAVSRALGDYDYKCVDGKGPTEQLVSPEPEVYEILRAEEDFIIACDGDWVMSNEELCEYVK  
SRLEVSDDLNVCNWWVDTCLHKGSRDNMSVLVCFNAPKVSDEAVKKDSELDKHLESRVEEI  
MEKSGEEGMPDLAHVMRILSAENIPNLPPGGGLAGKRNVEAVYSRLNPHRES DGASDEAEESG  
SQGKLVEALRQMRINHRGNRYQLLEMLTSYRLAKVEGEESPAEPAATATSSNSDAGNPVTMQE  
SHTESESGLAELDSSNEDAGTKMSGEKI

#### Host

Mouse

#### Reactivity

Human

#### Quality Control Testing

Antibody reactive against mammalian transfected lysate.

#### Storage Buffer

In 1x PBS, pH 7.4

#### Storage Instruction

Store at -20°C or lower. Aliquot to avoid repeated freezing and thawing.

## Applications

- Western Blot (Transfected lysate)

Western Blot analysis of PPM1B expression in transfected 293T cell line ([H00005495-T01](#)) by PPM1B MaxPab polyclonal antibody.

Lane 1: PPM1B transfected lysate(52.69 KDa).

Lane 2: Non-transfected lysate.

[Protocol Download](#)

## Gene Info — PPM1B

Entrez GeneID [5495](#)

GeneBank Accession# [NM\\_002706.4](#)

Protein Accession# [NP\\_002697.1](#)

Gene Name PPM1B

Gene Alias MGC21657, PP2C-beta-X, PP2CB, PP2CBETA, PPC2BETAX

Gene Description protein phosphatase 1B (formerly 2C), magnesium-dependent, beta isoform

Omim ID [603770](#)

Gene Ontology [Hyperlink](#)

**Gene Summary** The protein encoded by this gene is a member of the PP2C family of Ser/Thr protein phosphatases. PP2C family members are known to be negative regulators of cell stress response pathways. This phosphatase has been shown to dephosphorylate cyclin-dependent kinases (CDKs), and thus may be involved in cell cycle control. Overexpression of this phosphatase is reported to cause cell-growth arrest or cell death. Alternative splicing results in multiple transcript variants encoding different isoforms. Additional transcript variants have been described, but currently do not represent full-length sequences. [provided by RefSeq]

**Other Designations** OTTHUMP00000158953|OTTHUMP00000158955|protein phosphatase 1B|protein phosphatase 2C beta isoform|protein phosphatase 2C-like protein

## Pathway

- [MAPK signaling pathway](#)

## Disease

- [Tobacco Use Disorder](#)