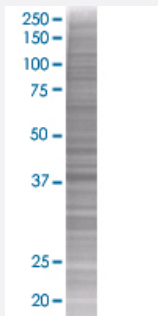


PPID 293T Cell Transient Overexpression Lysate(Denatured)

Catalog # H00005481-T01

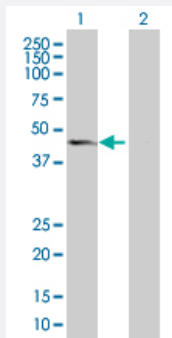
Size 100 uL

Applications



SDS-PAGE Gel

PPID transfected lysate



Western Blot

Lane 1: PPID transfected lysate (40.8 KDa).

Lane 2: Non-transfected lysate.

Specification

Transfected Cell Line 293T

Plasmid pCMV-PPID full-length

Host Human

Theoretical MW (kDa) 40.8

Quality Control Testing Transient overexpression cell lysate was tested with Anti-PPID antibody ([H00005481-B01](#)) by Western Blots.
 SDS-PAGE Gel
 PPID transfected lysate
 Western Blot
 Lane 1: PPID transfected lysate (40.8 KDa).
 Lane 2: Non-transfected lysate.

Storage Buffer

1X Sample Buffer (50 mM Tris-HCl, 2% SDS, 10% glycerol, 300 mM 2-mercaptoethanol, 0.01% Bromophenol blue)

Storage Instruction

Store at -80°C. Aliquot to avoid repeated freezing and thawing.

Applications

- Western Blot

Gene Info — PPID

Entrez GeneID[5481](#)**GeneBank Accession#**[NM_005038](#)**Protein Accession#**[NP_005029](#)**Gene Name**

PPID

Gene Alias

CYP-40, CYPD, MGC33096

Gene Description

peptidylprolyl isomerase D

Omim ID[601753](#)**Gene Ontology**[Hyperlink](#)**Gene Summary**

The protein encoded by this gene is a member of the peptidyl-prolyl cis-trans isomerase (PPIase) family. PPIases catalyze the cis-trans isomerization of proline imidic peptide bonds in oligopeptides and accelerate the folding of proteins. This protein has been shown to possess PPIase activity and, similar to other family members, can bind to the immunosuppressant cyclosporin A. [provided by RefSeq]

Other Designations

40 kDa peptidyl-prolyl cis-trans isomerase D|PPIase|cyclophilin 40|cyclophilin D|cyclophilin-related protein|rotamase

Pathway

- [Calcium signaling pathway](#)