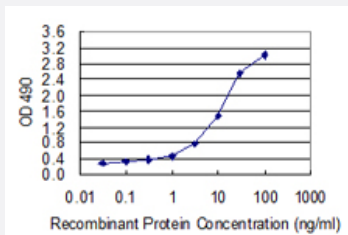


# PPID (Human) Matched Antibody Pair

Catalog # H00005481-AP22      Size 1 Set

## Applications



Sandwich ELISA detection sensitivity ranging from 0.03 ng/ml to 100 ng/ml.

## Specification

<b>Product Description</b>	This antibody pair set comes with a matched antibody pair to detect and quantify the protein level of human PPID.
<b>Reactivity</b>	Human
<b>Quality Control Testing</b>	Standard curve using recombinant protein ( H00005481-P01 ) as an analyte. Sandwich ELISA detection sensitivity ranging from 0.03 ng/ml to 100 ng/ml.
<b>Supplied Product</b>	Antibody pair set content: 1. Capture antibody: rabbit MaxPab® affinity purified polyclonal anti-PPID (100 ug) 2. Detection antibody: mouse purified polyclonal anti-PPID (20 ug) *Reagents are sufficient for at least 1-2 x 96 well plates using recommended protocols.
<b>Storage Instruction</b>	Store reagents of the antibody pair set at -20°C or lower. Please aliquot to avoid repeated freeze thaw cycle. Reagents should be returned to -20°C storage immediately after use.

## Applications

- ELISA Pair (Recombinant protein)

[Protocol Download](#)

## Gene Info — PPID

**Entrez GeneID** [5481](#)**Gene Name** PPID**Gene Alias** CYP-40, CYPD, MGC33096**Gene Description** peptidylprolyl isomerase D**Omim ID** [601753](#)**Gene Ontology** [Hyperlink](#)

**Gene Summary** The protein encoded by this gene is a member of the peptidyl-prolyl cis-trans isomerase (PPlase) family. PPlases catalyze the cis-trans isomerization of proline imidic peptide bonds in oligopeptides and accelerate the folding of proteins. This protein has been shown to possess PPlase activity and, similar to other family members, can bind to the immunosuppressant cyclosporin A. [provided by RefSeq]

**Other Designations** 40 kDa peptidyl-prolyl cis-trans isomerase D|PPlase|cyclophilin 40|cyclophilin D|cyclophilin-related protein|rotamase

## Pathway

- [Calcium signaling pathway](#)