

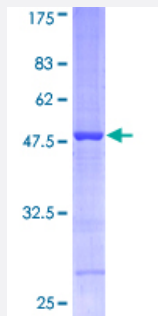
Full-Length

PPIB (Human) Recombinant Protein (P01)

Catalog # H00005479-P01

Size 25 ug, 10 ug

Applications



Specification

Product Description	Human PPIB full-length ORF (AAH08848, 1 a.a. - 216 a.a.) recombinant protein with GST-tag at N-terminal.
Sequence	MLRLSERNMKVLLAAALIAGSVFFLLLPGPSAADEKKKGPKVTVKVYFDLRIGDEDVGRVIFGLFG KTVPKTVDNFVALATGEKGFYKNSKFHRVIKDFMIQGGDFTRGDGTGGKSIYGERFPDENFKLK HYGPGWVSMANAGKDTNGSQFFITTVKTAWLDGKHVVFGKVLEGMEVVRKVESTKTDSDRKPL KDVIADCGKIEVEKPFAIAKE
Host	Wheat Germ (in vitro)
Theoretical MW (kDa)	49.39
Interspecies Antigen Sequence	Mouse (94); Rat (93)
Preparation Method	in vitro wheat germ expression system
Purification	Glutathione Sepharose 4 Fast Flow
Quality Control Testing	12.5% SDS-PAGE Stained with Coomassie Blue.
Storage Buffer	50 mM Tris-HCl, 10 mM reduced Glutathione, pH=8.0 in the elution buffer.
Storage Instruction	Store at -80°C. Aliquot to avoid repeated freezing and thawing.

Note

Best use within three months from the date of receipt of this protein.

Applications

- Enzyme-linked Immunoabsorbent Assay
- Western Blot (Recombinant protein)
- Antibody Production
- Protein Array

Gene Info — PPIB

Entrez GeneID [5479](#)**GeneBank Accession#** [BC008848.1](#)**Protein Accession#** [AAH08848](#)**Gene Name** PPIB**Gene Alias** CYP-S1, CYPB, MGC14109, MGC2224, SCYLP**Gene Description** peptidylprolyl isomerase B (cyclophilin B)**Omim ID** [123841](#)**Gene Ontology** [Hyperlink](#)

Gene Summary The protein encoded by this gene is a cyclosporine-binding protein and is mainly located within the endoplasmic reticulum. It is associated with the secretory pathway and released in biological fluids. This protein can bind to cells derived from T- and B-lymphocytes, and may regulate cyclosporine A-mediated immunosuppression. [provided by RefSeq]

Other Designations PPlase|S-cyclophilin|cyclophilin B|cyclophilin-like protein|peptidyl-prolyl cis-trans isomerase B|peptidylprolyl isomerase B|rotamase

Disease

- [Disease Progression](#)

- [Disease Susceptibility](#)
- [HIV Infections](#)