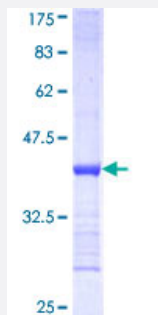


PP (Human) Recombinant Protein (Q01)

Catalog # H00005464-Q01

Size 25 ug, 10 ug

Applications



Specification

Product Description	Human PP partial ORF (NP_066952, 10 a.a. - 111 a.a.) recombinant protein with GST-tag at N-terminal.
Sequence	AAPFSLEYRVFLKNEKGQYISPFHDIPYADKDVHFMVVEVPRWSNAKMEIATKDPLNPIKQDVKK GKLRYVANLFPYKGYWNYGAIPQTWEDPGHNDKHT
Host	Wheat Germ (in vitro)
Theoretical MW (kDa)	36.96
Interspecies Antigen Sequence	Mouse (97); Rat (95)
Preparation Method	in vitro wheat germ expression system
Purification	Glutathione Sepharose 4 Fast Flow
Quality Control Testing	12.5% SDS-PAGE Stained with Coomassie Blue.
Storage Buffer	50 mM Tris-HCl, 10 mM reduced Glutathione, pH=8.0 in the elution buffer.
Storage Instruction	Store at -80°C. Aliquot to avoid repeated freezing and thawing.
Note	Best use within three months from the date of receipt of this protein.

Applications

- Enzyme-linked Immunoabsorbent Assay
- Western Blot (Recombinant protein)
- Antibody Production
- Protein Array

Gene Info — PPA1

Entrez GeneID [5464](#)

GeneBank Accession# [NM_021129](#)

Protein Accession# [NP_066952](#)

Gene Name PPA1

Gene Alias IOPPP, MGC111556, PP, PP1, SID6-8061

Gene Description pyrophosphatase (inorganic) 1

Omim ID [179030](#)

Gene Ontology [Hyperlink](#)

Gene Summary The protein encoded by this gene is a member of the inorganic pyrophosphatase (PPase) family. PPases catalyze the hydrolysis of pyrophosphate to inorganic phosphate, which is important for the phosphate metabolism of cells. Studies of a similar protein in bovine suggested a cytoplasmic localization of this enzyme. [provided by RefSeq]

Other Designations OTTHUMP00000019741|PPase|cytosolic inorganic pyrophosphatase|diphosphate phosphohydrolase|inorganic diphosphatase|inorganic pyrophosphatase 1|pyrophosphatase 1|pyrophosphate phospho-hydrolase

Pathway

- [Oxidative phosphorylation](#)