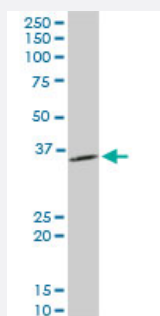


# PPA1 monoclonal antibody (M01), clone 3B2

Catalog # H00005464-M01

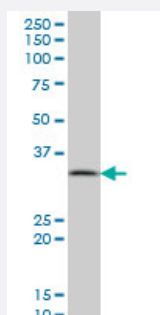
Size 100 ug

## Applications



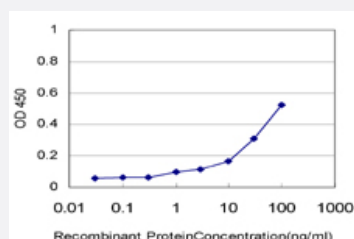
### Western Blot (Cell lysate)

PPA1 monoclonal antibody (M01), clone 3B2. Western Blot analysis of PPA1 expression in PC-12 ( Cat # L012V1 ).



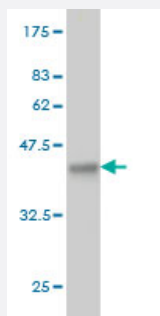
### Western Blot (Cell lysate)

PPA1 monoclonal antibody (M01), clone 3B2 Western Blot analysis of PPA1 expression in A-431 ( Cat # L015V1 ).



### Sandwich ELISA (Recombinant protein)

Detection limit for recombinant GST tagged PPA1 is approximately 1ng/ml as a capture antibody.



Western Blot detection against Immunogen (36.96 KDa) .

## Specification

<b>Product Description</b>	Mouse monoclonal antibody raised against a partial recombinant PPA1.
<b>Immunogen</b>	PPA1 (NP_066952, 10 a.a. ~ 111 a.a) partial recombinant protein with GST tag. MW of the GST tag alone is 26 KDa.
<b>Sequence</b>	AAPFSLEYRVFLKNEKGQYISPFHDIPYADKDVFHMVVEVPRWSNAKMEIATKDPLNPIKQDVKK GKLRVYANLFPYKGYWNYGAIPQTWEDPGHNDKHT
<b>Host</b>	Mouse
<b>Reactivity</b>	Human, Rat
<b>Interspecies Antigen Sequence</b>	Mouse (97); Rat (95)
<b>Isotype</b>	IgG1 Kappa
<b>Quality Control Testing</b>	Antibody Reactive Against Recombinant Protein. Western Blot detection against Immunogen (36.96 KDa) .
<b>Storage Buffer</b>	In 1x PBS, pH 7.4
<b>Storage Instruction</b>	Store at -20°C or lower. Aliquot to avoid repeated freezing and thawing.

## Applications

- Western Blot (Cell lysate)

PPA1 monoclonal antibody (M01), clone 3B2. Western Blot analysis of PPA1 expression in PC-12 ( Cat # L012V1 ).

[Protocol Download](#)

- Western Blot (Cell lysate)

PPA1 monoclonal antibody (M01), clone 3B2 Western Blot analysis of PPA1 expression in A-431 ( Cat # L015V1 ).

[Protocol Download](#)

- Western Blot (Recombinant protein)

[Protocol Download](#)

- Sandwich ELISA (Recombinant protein)

Detection limit for recombinant GST tagged PPA1 is approximately 1ng/ml as a capture antibody.

[Protocol Download](#)

- ELISA

## Gene Info — PPA1

Entrez GeneID [5464](#)

GeneBank Accession# [NM\\_021129](#)

Protein Accession# [NP\\_066952](#)

Gene Name PPA1

Gene Alias IOPPP, MGC111556, PP, PP1, SID6-8061

Gene Description pyrophosphatase (inorganic) 1

Omim ID [179030](#)

Gene Ontology [Hyperlink](#)

**Gene Summary** The protein encoded by this gene is a member of the inorganic pyrophosphatase (PPase) family. PPases catalyze the hydrolysis of pyrophosphate to inorganic phosphate, which is important for the phosphate metabolism of cells. Studies of a similar protein in bovine suggested a cytoplasmic localization of this enzyme. [provided by RefSeq]

**Other Designations** OTTHUMP00000019741|PPase|cytosolic inorganic pyrophosphatase|diphosphate phosphohydrolase|inorganic diphosphatase|inorganic pyrophosphatase 1|pyrophosphatase 1|pyrophosphate phospho-hydrolase

## Pathway

- [Oxidative phosphorylation](#)