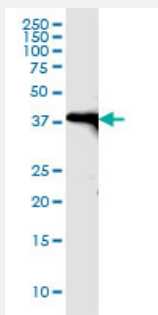


# POU6F1 (Human) IP-WB Antibody Pair

Catalog # H00005463-PW2

Size 1 Set

## Applications



Immunoprecipitation of POU6F1 transfected lysate using rabbit polyclonal anti-POU6F1 and Protein A Magnetic Bead ([U0007](#)), and immunoblotted with mouse purified polyclonal anti-POU6F1.

## Specification

<b>Product Description</b>	This IP-WB antibody pair set comes with one antibody for immunoprecipitation and another to detect the precipitated protein in western blot.
<b>Reactivity</b>	Human
<b>Quality Control Testing</b>	Immunoprecipitation-Western Blot (IP-WB) Immunoprecipitation of POU6F1 transfected lysate using rabbit polyclonal anti-POU6F1 and Protein A Magnetic Bead ( <a href="#">U0007</a> ), and immunoblotted with mouse purified polyclonal anti-POU6F1.
<b>Supplied Product</b>	Antibody pair set content: 1. Antibody pair for IP: rabbit polyclonal anti-POU6F1 (300 ul) 2. Antibody pair for WB: mouse purified polyclonal anti-POU6F1 (50 ug)
<b>Storage Instruction</b>	Store reagents of the antibody pair set at -20°C or lower. Please aliquot to avoid repeated freeze thaw cycle. Reagents should be returned to -20°C storage immediately after use.

## Applications

- Immunoprecipitation-Western Blot

[Protocol Download](#)

## Gene Info — POU6F1

Entrez GeneID	<a href="#">5463</a>
Gene Name	POU6F1
Gene Alias	BRN5, MPOU, TCFB1
Gene Description	POU class 6 homeobox 1
Gene Ontology	<a href="#">Hyperlink</a>
Gene Summary	class 6
Other Designations	POU domain, class 6, transcription factor 1