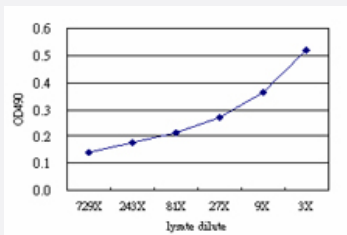


POU6F1 (Human) Matched Antibody Pair

Catalog # H00005463-AP51

Size 1 Set

Applications



Sandwich ELISA detection sensitivity ranging from approximately 729x to 3x dilution of the POU6F1 293T overexpression lysate (non-denatured).

Specification

Product Description	This antibody pair set comes with a matched antibody pair to detect and quantify the protein level of human POU6F1.
Reactivity	Human
Quality Control Testing	Standard curve using POU6F1 293T overexpression lysate (non-denatured) as an analyte. Sandwich ELISA detection sensitivity ranging from approximately 729x to 3x dilution of the POU6F1 293T overexpression lysate (non-denatured).
Supplied Product	Antibody pair set content: 1. Capture antibody: mouse monoclonal anti-POU6F1 (100 ug) 2. Detection antibody: rabbit purified polyclonal anti-POU6F1 (50 ug) *Reagents are sufficient for at least 3-5 x 96 well plates using recommended protocols.
Storage Instruction	Store reagents of the antibody pair set at -20°C or lower. Please aliquot to avoid repeated freeze thaw cycle. Reagents should be returned to -20°C storage immediately after use.

Applications

- ELISA Pair (Transfected lysate)

[Protocol Download](#)

Gene Info — POU6F1

Entrez GeneID	5463
Gene Name	POU6F1
Gene Alias	BRN5, MPOU, TCFB1
Gene Description	POU class 6 homeobox 1
Gene Ontology	Hyperlink
Gene Summary	class 6
Other Designations	POU domain, class 6, transcription factor 1