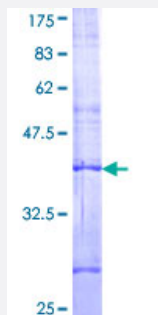


POLRMT (Human) Recombinant Protein (Q01)

Catalog # H00005442-Q01

Size 25 ug, 10 ug

Applications



Specification

Product Description	Human POLRMT partial ORF (NP_005026, 1121 a.a. - 1230 a.a.) recombinant protein with GST-tag at N-terminal.
Sequence	PNFIHSLDSSHMMMLTALHCYRKGLTFVSVHDCYWTHAADVSVMNQVCREQFVRLHSEPILQDLS RFLVKRFCSEPQKILEASQLKETLQAVPKPGAFDLEQVKRSTYFFS
Host	Wheat Germ (in vitro)
Theoretical MW (kDa)	37.84
Interspecies Antigen Sequence	Mouse (73); Rat (72)
Preparation Method	in vitro wheat germ expression system
Purification	Glutathione Sepharose 4 Fast Flow
Quality Control Testing	12.5% SDS-PAGE Stained with Coomassie Blue.
Storage Buffer	50 mM Tris-HCl, 10 mM reduced Glutathione, pH=8.0 in the elution buffer.
Storage Instruction	Store at -80°C. Aliquot to avoid repeated freezing and thawing.
Note	Best use within three months from the date of receipt of this protein.

Applications

- Enzyme-linked Immunoabsorbent Assay
- Western Blot (Recombinant protein)
- Antibody Production
- Protein Array

Gene Info — POLRMT

Entrez GeneID [5442](#)

GeneBank Accession# [NM_005035](#)

Protein Accession# [NP_005026](#)

Gene Name POLRMT

Gene Alias APOLMT, MTRNAP, MTRPOL, h-mtRPOL

Gene Description polymerase (RNA) mitochondrial (DNA directed)

Omim ID [601778](#)

Gene Ontology [Hyperlink](#)

Gene Summary This gene encodes a mitochondrial DNA-directed RNA polymerase. The gene product is responsible for mitochondrial gene expression as well as for providing RNA primers for initiation of replication of the mitochondrial genome. Although this polypeptide has the same function as the three nuclear DNA-directed RNA polymerases, it is more closely related to RNA polymerases of phage and mitochondrial polymerases of lower eukaryotes. [provided by RefSeq]

Other Designations mitochondrial DNA-directed RNA polymerase

Disease

- [Urinary Bladder Neoplasms](#)