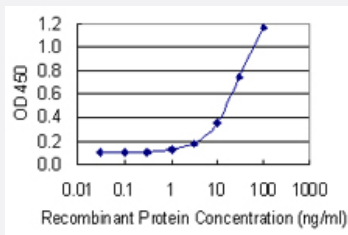


# POLRMT monoclonal antibody (M01), clone 3D9

Catalog # H00005442-M01

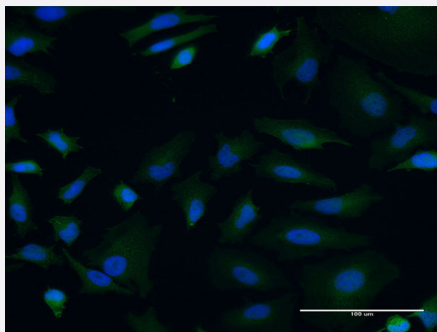
Size 100 ug

## Applications



### Sandwich ELISA (Recombinant protein)

Detection limit for recombinant GST tagged POLRMT is 0.3 ng/ml as a capture antibody.



### Immunofluorescence

Immunofluorescence of monoclonal antibody to POLRMT on HeLa cell .  
[antibody concentration 10 ug/ml]

## Specification

Product Description	Mouse monoclonal antibody raised against a partial recombinant POLRMT.
Immunogen	POLRMT (NP_005026, 1121 a.a. ~ 1230 a.a) partial recombinant protein with GST tag. MW of the GST tag alone is 26 KDa.
Sequence	PNFIHSLDSSHMLLTALHCYRKGLTFVSVHDCYWTHAADVSVMNQVCREQFVRLHSEPILQDLS RFLVKRFCSEPQKILEASQLKETLQAVPKPGAFDLEQVKRSTYFFS
Host	Mouse
Reactivity	Human

**Interspecies Antigen Sequence**

Mouse (73); Rat (72)

**Isotype**

IgG2a Kappa

**Quality Control Testing**

Antibody Reactive Against Recombinant Protein.

**Storage Buffer**

In 1x PBS, pH 7.4

**Storage Instruction**

Store at -20°C or lower. Aliquot to avoid repeated freezing and thawing.

## Applications

- Sandwich ELISA (Recombinant protein)

Detection limit for recombinant GST tagged POLRMT is 0.3 ng/ml as a capture antibody.

[Protocol Download](#)

- ELISA

- Immunofluorescence

Immunofluorescence of monoclonal antibody to POLRMT on HeLa cell . [antibody concentration 10 ug/ml]

## Gene Info — POLRMT

**Entrez GeneID**[5442](#)**GeneBank Accession#**[NM\\_005035](#)**Protein Accession#**[NP\\_005026](#)**Gene Name**

POLRMT

**Gene Alias**

APOLMT, MTRNAP, MTRPOL, h-mtRPOL

**Gene Description**

polymerase (RNA) mitochondrial (DNA directed)

**Omim ID**[601778](#)**Gene Ontology**[Hyperlink](#)

**Gene Summary**

This gene encodes a mitochondrial DNA-directed RNA polymerase. The gene product is responsible for mitochondrial gene expression as well as for providing RNA primers for initiation of replication of the mitochondrial genome. Although this polypeptide has the same function as the three nuclear DNA-directed RNA polymerases, it is more closely related to RNA polymerases of phage and mitochondrial polymerases of lower eukaryotes. [provided by RefSeq]

**Other Designations**

mitochondrial DNA-directed RNA polymerase

**Disease**

- [Urinary Bladder Neoplasms](#)