

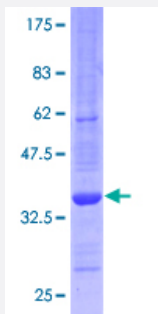
Full-Length

# POLR2L (Human) Recombinant Protein (P01)

Catalog # H00005441-P01

Size 25 ug, 10 ug

## Applications



## Specification

Product Description	Human POLR2L full-length ORF ( AAH18649, 1 a.a. - 67 a.a.) recombinant protein with GST-tag at N-terminal.
Sequence	MIIPVRCFTCGKIVGNKWEAYLGLLQAEYTEGDALDALGLKRYCCRRMLLAHVDLIEKLLNYAPLEK
Host	Wheat Germ (in vitro)
Theoretical MW (kDa)	33
Preparation Method	<a href="#">in vitro wheat germ expression system</a>
Purification	Glutathione Sepharose 4 Fast Flow
Quality Control Testing	12.5% SDS-PAGE Stained with Coomassie Blue.
Storage Buffer	50 mM Tris-HCl, 10 mM reduced Glutathione, pH=8.0 in the elution buffer.
Storage Instruction	Store at -80°C. Aliquot to avoid repeated freezing and thawing.
Note	Best use within three months from the date of receipt of this protein.

## Applications

- Enzyme-linked Immunoabsorbent Assay
- Western Blot (Recombinant protein)
- Antibody Production
- Protein Array

## Gene Info — POLR2L

Entrez GeneID [5441](#)

GeneBank Accession# [BC018649.1](#)

Protein Accession# [AAH18649](#)

Gene Name POLR2L

Gene Alias RBP10, RPABC5, RPB10, RPB10beta, RPB7.6, hRPB7.6, hsRPB10b

Gene Description polymerase (RNA) II (DNA directed) polypeptide L, 7.6kDa

Omim ID [601189](#)

Gene Ontology [Hyperlink](#)

**Gene Summary** This gene encodes a subunit of RNA polymerase II, the polymerase responsible for synthesizing messenger RNA in eukaryotes. The product of this gene contains four conserved cysteines characteristic of an atypical zinc-binding domain. Like its counterpart in yeast, this subunit may be shared by the other two DNA-directed RNA polymerases. [provided by RefSeq]

**Other Designations** DNA directed RNA polymerase II polypeptide L|polymerase (RNA) II (DNA directed) polypeptide L (7.6kD)

## Pathway

- [Metabolic pathways](#)
- [Purine metabolism](#)

- [Pyrimidine metabolism](#)
- [RNA polymerase](#)