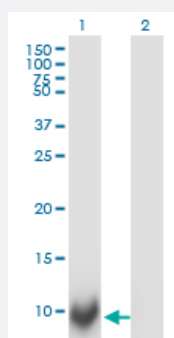


# POLR2J monoclonal antibody (M02), clone 1A10

Catalog # H00005439-M02

Size 100 ug

## Applications

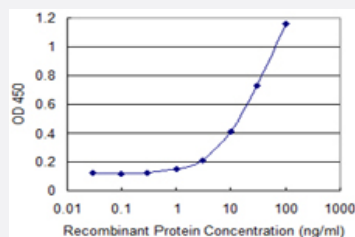


### Western Blot (Transfected lysate)

Western Blot analysis of POLR2J expression in transfected 293T cell line by POLR2J monoclonal antibody (M02), clone 1A10.

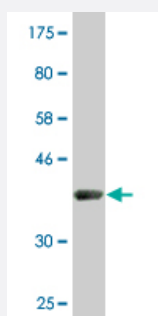
Lane 1: POLR2J transfected lysate (13.3 KDa).

Lane 2: Non-transfected lysate.



### Sandwich ELISA (Recombinant protein)

Detection limit for recombinant GST tagged POLR2J is 0.3 ng/ml as a capture antibody.



Western Blot detection against Immunogen (38.61 KDa).

## Specification

### Product Description

Mouse monoclonal antibody raised against a full-length recombinant POLR2J.

Immunogen	POLR2J (AAH24165, 1 a.a. ~ 117 a.a) full-length recombinant protein with GST tag. MW of the GST tag alone is 26 KDa.
Sequence	MNAPPAFESFLLFEGEKKITINKDTKVPNACLFINKEDHTLGNIKSQLLKDPQVLFAGYKVPHPLE HKIIIRVQTTDPDYSPEAFTNAITDLISELSLLEERFRVAIKDKQEGIE
Host	Mouse
Reactivity	Human
Isotype	IgG1 Kappa
Quality Control Testing	Antibody Reactive Against Recombinant Protein. Western Blot detection against Immunogen (38.61 KDa) .
Storage Buffer	In 1x PBS, pH 7.4
Storage Instruction	Store at -20°C or lower. Aliquot to avoid repeated freezing and thawing.

## Applications

- Western Blot (Transfected lysate)

Western Blot analysis of POLR2J expression in transfected 293T cell line by POLR2J monoclonal antibody (M02), clone 1A10.

Lane 1: POLR2J transfected lysate(13.3 KDa).

Lane 2: Non-transfected lysate.

[Protocol Download](#)

- Western Blot (Recombinant protein)

[Protocol Download](#)

- Sandwich ELISA (Recombinant protein)

Detection limit for recombinant GST tagged POLR2J is 0.3 ng/ml as a capture antibody.

[Protocol Download](#)

- ELISA

## Gene Info — POLR2J

Entrez GeneID [5439](#)

GeneBank Accession# [BC024165](#)

Protein Accession#	<a href="#">AAH24165</a>
Gene Name	POLR2J
Gene Alias	MGC71910, POLR2J1, RPB11, RPB11A, RPB11m, hRPB14
Gene Description	polymerase (RNA) II (DNA directed) polypeptide J, 13.3kDa
Omim ID	<a href="#">604150</a>
Gene Ontology	<a href="#">Hyperlink</a>
Gene Summary	<p>This gene encodes a subunit of RNA polymerase II, the polymerase responsible for synthesizing messenger RNA in eukaryotes. The product of this gene exists as a heterodimer with another polymerase subunit; together they form a core subassembly unit of the polymerase. Two similar genes are located nearby on chromosome 7q22.1 and a pseudogene is found on chromosome 7p13. [provided by RefSeq]</p>
Other Designations	DNA directed RNA polymerase II polypeptide J polymerase (RNA) II (DNA directed) polypeptide J (13.3kD)

## Pathway

- [Metabolic pathways](#)
- [Purine metabolism](#)
- [Pyrimidine metabolism](#)
- [RNA polymerase](#)

## Disease

- [Urinary Bladder Neoplasms](#)