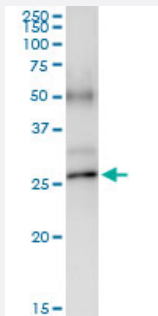


POLR2E (Human) IP-WB Antibody Pair

Catalog # H00005434-PW1

Size 1 Set

Applications



Immunoprecipitation of POLR2E transfected lysate using rabbit polyclonal anti-POLR2E and Protein A Magnetic Bead ([U0007](#)), and immunoblotted with mouse purified polyclonal anti-POLR2E.

Specification

Product Description	This IP-WB antibody pair set comes with one antibody for immunoprecipitation and another to detect the precipitated protein in western blot.
Reactivity	Human
Interspecies Antigen Sequence	Mouse (99%); Rat (99%)
Quality Control Testing	Immunoprecipitation-Western Blot (IP-WB) Immunoprecipitation of POLR2E transfected lysate using rabbit polyclonal anti-POLR2E and Protein A Magnetic Bead (U0007), and immunoblotted with mouse purified polyclonal anti-POLR2E.
Supplied Product	Antibody pair set content: 1. Antibody pair for IP: rabbit polyclonal anti-POLR2E (300 ul) 2. Antibody pair for WB: mouse purified polyclonal anti-POLR2E (50 ug)
Storage Instruction	Store reagents of the antibody pair set at -20°C or lower. Please aliquot to avoid repeated freeze thaw cycle. Reagents should be returned to -20°C storage immediately after use.

Applications

- Immunoprecipitation-Western Blot

[Protocol Download](#)

Gene Info — POLR2E

Entrez GeneID [5434](#)

Gene Name POLR2E

Gene Alias RPABC1, RPB5, XAP4, hRPB25, hsRPB5

Gene Description polymerase (RNA) II (DNA directed) polypeptide E, 25kDa

Omim ID [180664](#)

Gene Ontology [Hyperlink](#)

Gene Summary This gene encodes the fifth largest subunit of RNA polymerase II, the polymerase responsible for synthesizing messenger RNA in eukaryotes. This subunit is shared by the other two DNA-directed RNA polymerases and is present in two-fold molar excess over the other polymerase subunits. An interaction between this subunit and a hepatitis virus transactivating protein has been demonstrated, suggesting that interaction between transcriptional activators and the polymerase can occur through this subunit. A pseudogene is located on chromosome 11. [provided by RefSeq]

Other Designations DNA directed RNA polymerase II 23 kda polypeptide|DNA directed RNA polymerase II polypeptide E|polymerase (RNA) II (DNA directed) polypeptide E (25kD)

Pathway

- [Metabolic pathways](#)
- [Purine metabolism](#)
- [Pyrimidine metabolism](#)
- [RNA polymerase](#)

Disease

- [Genetic Predisposition to Disease](#)
- [Hematologic Diseases](#)

- [Occupational Diseases](#)
- [Urinary Bladder Neoplasms](#)