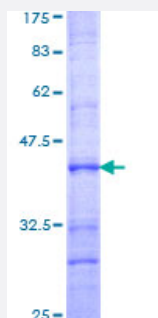


# PRRX1 (Human) Recombinant Protein (Q01)

Catalog # H00005396-Q01

Size 25 ug, 10 ug

## Applications



## Specification

<b>Product Description</b>	Human PRRX1 partial ORF ( NP_073207, 1 a.a. - 90 a.a.) recombinant protein with GST-tag at N-terminal.
<b>Sequence</b>	MTSSYGHVLERQPALGGRLDSPGNLDTLQAKKNFSVSHLLDLEEAGDMVAAQADENVGEAGRS LLESPGLTSGSDTPQQDNDQLNSEEKK
<b>Host</b>	Wheat Germ (in vitro)
<b>Theoretical MW (kDa)</b>	35.64
<b>Interspecies Antigen Sequence</b>	Mouse (99); Rat (99)
<b>Preparation Method</b>	<a href="#">in vitro wheat germ expression system</a>
<b>Purification</b>	Glutathione Sepharose 4 Fast Flow
<b>Quality Control Testing</b>	12.5% SDS-PAGE Stained with Coomassie Blue.
<b>Storage Buffer</b>	50 mM Tris-HCl, 10 mM reduced Glutathione, pH=8.0 in the elution buffer.
<b>Storage Instruction</b>	Store at -80°C. Aliquot to avoid repeated freezing and thawing.
<b>Note</b>	Best use within three months from the date of receipt of this protein.

## Applications

- Enzyme-linked Immunoabsorbent Assay
- Western Blot (Recombinant protein)
- Antibody Production
- Protein Array

## Gene Info — PRRX1

Entrez GeneID	<a href="#">5396</a>
GeneBank Accession#	<a href="#">NM_022716</a>
Protein Accession#	<a href="#">NP_073207</a>
Gene Name	PRRX1
Gene Alias	PHOX1, PMX1, PRX1
Gene Description	paired related homeobox 1
Omim ID	<a href="#">167420</a>
Gene Ontology	<a href="#">Hyperlink</a>
Gene Summary	The DNA-associated protein encoded by this gene is a member of the paired family of homeobox proteins localized to the nucleus. The protein functions as a transcription co-activator, enhancing the DNA-binding activity of serum response factor, a protein required for the induction of genes by growth and differentiation factors. The protein regulates muscle creatine kinase, indicating a role in the establishment of diverse mesodermal muscle types. Alternative splicing yields two isoforms that differ in abundance and expression patterns. [provided by RefSeq]
Other Designations	OTTHUMP00000033166 OTTHUMP00000033167 homeobox protein PHOX1 paired mesoderm homeobox 1 paired mesoderm homeobox 1 isoform pmx-1b

## Disease

- [Cleft Lip](#)
- [Cleft Palate](#)

- [Tooth Abnormalities](#)