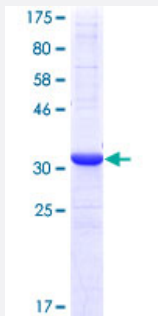


PMM2 (Human) Recombinant Protein (Q01)

Catalog # H00005373-Q01

Size 25 ug, 10 ug

Applications



Specification

Product Description	Human PMM2 partial ORF (NP_000294, 47 a.a. - 111 a.a.) recombinant protein with GST-tag at N-terminal.
Sequence	SDFEKVQEQLGNDVVEKYDYVPENGLVAYKDGKLLCRQNIQSHLGEALIQDLINYCLSYIAKIK
Host	Wheat Germ (in vitro)
Theoretical MW (kDa)	32.89
Preparation Method	in vitro wheat germ expression system
Purification	Glutathione Sepharose 4 Fast Flow
Quality Control Testing	12.5% SDS-PAGE Stained with Coomassie Blue.
Storage Buffer	50 mM Tris-HCl, 10 mM reduced Glutathione, pH=8.0 in the elution buffer.
Storage Instruction	Store at -80°C. Aliquot to avoid repeated freezing and thawing.
Note	Best use within three months from the date of receipt of this protein.

Applications

- Enzyme-linked Immunoabsorbent Assay
- Western Blot (Recombinant protein)
- Antibody Production
- Protein Array

Gene Info — PMM2

Entrez GeneID	5373
GeneBank Accession#	NM_000303
Protein Accession#	NP_000294
Gene Name	PMM2
Gene Alias	CDG1, CDG1a, CDGS
Gene Description	phosphomannomutase 2
Omim ID	212065 601785
Gene Ontology	Hyperlink
Gene Summary	The protein encoded by this gene catalyzes the isomerization of mannose 6-phosphate to mannose 1-phosphate, which is a precursor to GDP-mannose necessary for the synthesis of dolichol-P-oligosaccharides. Mutations in this gene have been shown to cause defects in glycoprotein biosynthesis, which manifests as carbohydrate-deficient glycoprotein syndrome type I. [provided by RefSeq]
Other Designations	-

Pathway

- [Amino sugar and nucleotide sugar metabolism](#)
- [Fructose and mannose metabolism](#)
- [Metabolic pathways](#)