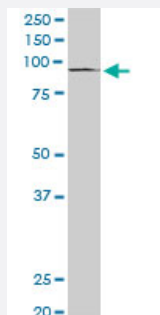


# PML monoclonal antibody (M04), clone 2B10

Catalog # H00005371-M04

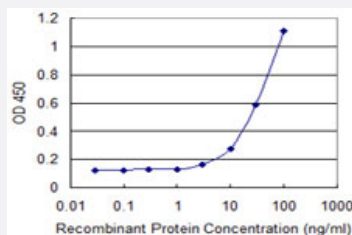
Size 100 ug

## Applications



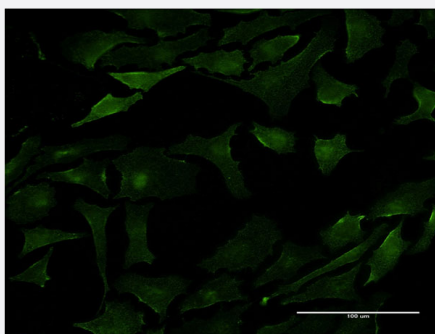
### Western Blot (Cell lysate)

PML monoclonal antibody (M04), clone 2B10. Western Blot analysis of PML expression in HepG2(Cat # L019V1 ).



### Sandwich ELISA (Recombinant protein)

Detection limit for recombinant GST tagged PML is 1 ng/ml as a capture antibody.



### Immunofluorescence

Immunofluorescence of monoclonal antibody to PML on HeLa cell . [antibody concentration 10 ug/ml]

## Specification

### Product Description

Mouse monoclonal antibody raised against a partial recombinant PML.

<b>Immunogen</b>	PML (AAH00080, 411 a.a. ~ 510 a.a) partial recombinant protein with GST tag. MW of the GST tag alone is 26 KDa.
<b>Sequence</b>	RDPIDVDLDVSNTTTAQKRKCSQTQCPRKVIKMESEEGKEARLARSSPEQPRPSTSKAVSPPHL DGPPSPRSPVIGSEVFLPNSNHVASGAGEAEERVVV
<b>Host</b>	Mouse
<b>Reactivity</b>	Human
<b>Interspecies Antigen Sequence</b>	Mouse (60)
<b>Isotype</b>	IgG1 Kappa
<b>Quality Control Testing</b>	Antibody Reactive Against Recombinant Protein.
<b>Storage Buffer</b>	In 1x PBS, pH 7.4
<b>Storage Instruction</b>	Store at -20°C or lower. Aliquot to avoid repeated freezing and thawing.

## Applications

- Western Blot (Cell lysate)

PML monoclonal antibody (M04), clone 2B10. Western Blot analysis of PML expression in HepG2(Cat # L019V1 ).

[Protocol Download](#)

- Sandwich ELISA (Recombinant protein)

Detection limit for recombinant GST tagged PML is 1 ng/ml as a capture antibody.

[Protocol Download](#)

- ELISA

- Immunofluorescence

Immunofluorescence of monoclonal antibody to PML on HeLa cell . [antibody concentration 10 ug/ml]

## Gene Info — PML

**Entrez GeneID** [5371](#)

**GeneBank Accession#** [BC000080](#)

Protein Accession#	<a href="#">AAH00080</a>
Gene Name	PML
Gene Alias	MYL, PP8675, RNF71, TRIM19
Gene Description	promyelocytic leukemia
Omim ID	<a href="#">102578</a>
Gene Ontology	<a href="#">Hyperlink</a>
Gene Summary	<p>The protein encoded by this gene is a member of the tripartite motif (TRIM) family. The TRIM motif includes three zinc-binding domains, a RING, a B-box type 1 and a B-box type 2, and a coiled-coil region. This phosphoprotein localizes to nuclear bodies where it functions as a transcription factor and tumor suppressor. Its expression is cell-cycle related and it regulates the p53 response to oncogenic signals. The gene is often involved in the translocation with the retinoic acid receptor alpha gene associated with acute promyelocytic leukemia (APL). Extensive alternative splicing of this gene results in several variations of the protein's central and C-terminal regions; all variants encode the same N-terminus. Alternatively spliced transcript variants encoding different isoforms have been identified. [provided by RefSeq]</p>
Other Designations	promyelocytic leukemia protein promyelocytic leukemia, inducer of tripartite motif protein TRIM19

## Pathway

- [Acute myeloid leukemia](#)
- [Pathways in cancer](#)
- [Ubiquitin mediated proteolysis](#)

## Disease

- [Cerebral Hemorrhage](#)
- [Genetic Predisposition to Disease](#)
- [Hypertension](#)
- [Intracranial Hemorrhages](#)
- [Leukemia](#)
- [Stroke](#)
- [Subarachnoid Hemorrhage](#)

- [Tobacco Use Disorder](#)