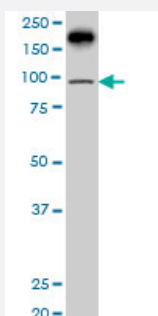


# PML monoclonal antibody (M02), clone 1D12

Catalog # H00005371-M02

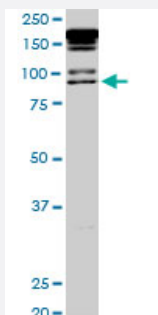
Size 100 ug

## Applications



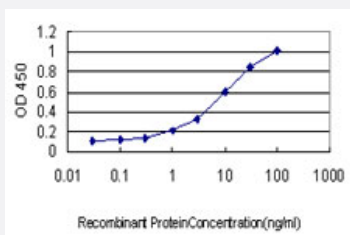
### Western Blot (Cell lysate)

PML monoclonal antibody (M02), clone 1D12 Western Blot analysis of PML expression in HeLa S3 NE ( Cat # L013V3 ).



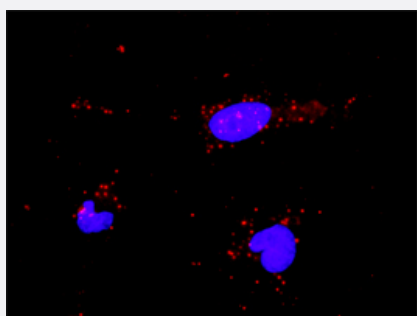
### Western Blot (Cell lysate)

PML monoclonal antibody (M02), clone 1D12. Western Blot analysis of PML expression in PC-12 (Cat # L012V1 ).



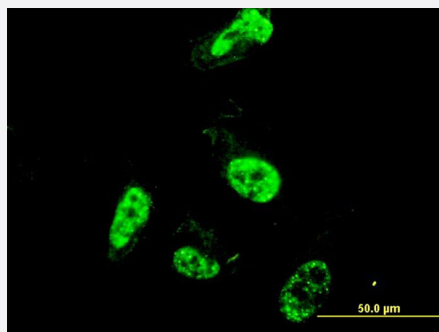
### Sandwich ELISA (Recombinant protein)

Detection limit for recombinant GST tagged PML is approximately 0.3ng/ml as a capture antibody.



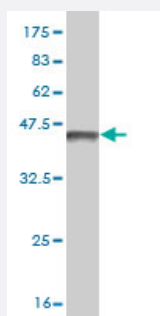
### In situ Proximity Ligation Assay (Cell)

Proximity Ligation Analysis of protein-protein interactions between TP53 and PML. HeLa cells were stained with anti-TP53 rabbit purified polyclonal 1:1200 and anti-PML mouse monoclonal antibody 1:50. Each red dot represents the detection of protein-protein interaction complex, and nuclei were counterstained with DAPI (blue).



## Immunofluorescence

Immunofluorescence of monoclonal antibody to PML on HeLa cell. [antibody concentration 10 ug/ml]



Western Blot detection against Immunogen (36.63 KDa) .

## Specification

<b>Product Description</b>	Mouse monoclonal antibody raised against a partial recombinant PML.
<b>Immunogen</b>	PML (AAH00080, 411 a.a. ~ 510 a.a) partial recombinant protein with GST tag. MW of the GST tag alone is 26 KDa.
<b>Sequence</b>	RDPIDVDLDVSNTTTAQKRKCSQTQCPRKVIKMESEEGKEARLARSSPEQPRPSTSKAVSPPHL DGPPSPRSPVIGSEVFLPNSNHVASGAGEAEERVVV
<b>Host</b>	Mouse
<b>Reactivity</b>	Human, Rat
<b>Interspecies Antigen Sequence</b>	Mouse (60)
<b>Isotype</b>	IgG2a Kappa
<b>Quality Control Testing</b>	Antibody Reactive Against Recombinant Protein. Western Blot detection against Immunogen (36.63 KDa) .
<b>Storage Buffer</b>	In 1x PBS, pH 7.4
<b>Storage Instruction</b>	Store at -20°C or lower. Aliquot to avoid repeated freezing and thawing.

## Applications

- Western Blot (Cell lysate)

PML monoclonal antibody (M02), clone 1D12 Western Blot analysis of PML expression in Hela S3 NE ( Cat # L013V3 ).

[Protocol Download](#)

- Western Blot (Cell lysate)

PML monoclonal antibody (M02), clone 1D12. Western Blot analysis of PML expression in PC-12(Cat # L012V1 ).

[Protocol Download](#)

- Western Blot (Recombinant protein)

[Protocol Download](#)

- Sandwich ELISA (Recombinant protein)

Detection limit for recombinant GST tagged PML is approximately 0.3ng/ml as a capture antibody.

[Protocol Download](#)

- ELISA

- *In situ* Proximity Ligation Assay (Cell)

Proximity Ligation Analysis of protein-protein interactions between TP53 and PML. HeLa cells were stained with anti-TP53 rabbit purified polyclonal 1:1200 and anti-PML mouse monoclonal antibody 1:50. Each red dot represents the detection of protein-protein interaction complex, and nuclei were counterstained with DAPI (blue).

- Immunofluorescence

Immunofluorescence of monoclonal antibody to PML on HeLa cell. [antibody concentration 10 ug/ml]

## Gene Info — PML

Entrez GeneID	<a href="#">5371</a>
---------------	----------------------

GeneBank Accession#	<a href="#">BC000080</a>
---------------------	--------------------------

Protein Accession#	<a href="#">AAH00080</a>
--------------------	--------------------------

Gene Name	PML
-----------	-----

Gene Alias	MYL, PP8675, RNF71, TRIM19
------------	----------------------------

Gene Description	promyelocytic leukemia
Omim ID	<a href="#">102578</a>
Gene Ontology	<a href="#">Hyperlink</a>
Gene Summary	The protein encoded by this gene is a member of the tripartite motif (TRIM) family. The TRIM motif includes three zinc-binding domains, a RING, a B-box type 1 and a B-box type 2, and a coiled-coil region. This phosphoprotein localizes to nuclear bodies where it functions as a transcription factor and tumor suppressor. Its expression is cell-cycle related and it regulates the p53 response to oncogenic signals. The gene is often involved in the translocation with the retinoic acid receptor alpha gene associated with acute promyelocytic leukemia (APL). Extensive alternative splicing of this gene results in several variations of the protein's central and C-terminal regions; all variants encode the same N-terminus. Alternatively spliced transcript variants encoding different isoforms have been identified. [provided by RefSeq]
Other Designations	promyelocytic leukemia protein promyelocytic leukemia, inducer of tripartite motif protein TRIM19

## Publication Reference

- [Senescence is a developmental mechanism that contributes to embryonic growth and patterning.](#)

Mekayla Storer, Alba Mas, Alexandre Robert-Moreno, Matteo Pecoraro, M Carmen Ortells, Valeria Di Giacomo, Reut Yosef, Noam Pilpel, Valery Krizhanovsky, James Sharpe, William M Keyes.

Cell 2013 Nov; 155(5):1119.

Application: IF, Mouse, Mouse limb, Mouse neural tube

## Pathway

- [Acute myeloid leukemia](#)
- [Pathways in cancer](#)
- [Ubiquitin mediated proteolysis](#)

## Disease

- [Cerebral Hemorrhage](#)
- [Genetic Predisposition to Disease](#)
- [Hypertension](#)
- [Intracranial Hemorrhages](#)

- [Leukemia](#)
- [Stroke](#)
- [Subarachnoid Hemorrhage](#)
- [Tobacco Use Disorder](#)