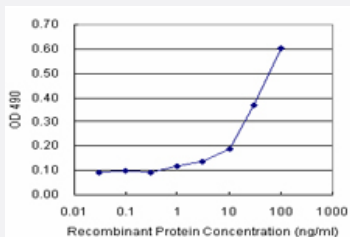


PLSCR1 (Human) Matched Antibody Pair

Catalog # H00005359-AP11

Size 1 Set

Applications



Sandwich ELISA detection sensitivity ranging from 10 ng/ml to 100 ng/ml.

Specification

Product Description	This antibody pair set comes with a matched antibody pair to detect and quantify the protein level of human PLSCR1.
Reactivity	Human
Quality Control Testing	Standard curve using recombinant protein (H00005359-P02) as an analyte. Sandwich ELISA detection sensitivity ranging from 10 ng/ml to 100 ng/ml.
Supplied Product	Antibody pair set content: 1. Capture antibody: rabbit MaxPab® affinity purified polyclonal anti-PLSCR1 (100 ug) 2. Detection antibody: mouse monoclonal anti-PLSCR1, IgG2a Kappa (20 ug) *Reagents are sufficient for at least 1-2 x 96 well plates using recommended protocols.
Storage Instruction	Store reagents of the antibody pair set at -20°C or lower. Please aliquot to avoid repeated freeze thaw cycle. Reagents should be returned to -20°C storage immediately after use.

Applications

- ELISA Pair (Recombinant protein)

[Protocol Download](#)

Gene Info — PLSCR1

Entrez GeneID	5359
Gene Name	PLSCR1
Gene Alias	MMTRA1B
Gene Description	phospholipid scramblase 1
Omim ID	604170
Gene Ontology	Hyperlink
Other Designations	-