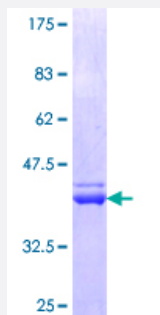


PLS1 (Human) Recombinant Protein (Q01)

Catalog # H00005357-Q01

Size 25 ug, 10 ug

Applications



Specification

Product Description	Human PLS1 partial ORF (NP_002661.1, 1 a.a. - 102 a.a.) recombinant protein with GST-tag at N-terminal.
Sequence	MENSTTTISREELEELQEAFNKIDIDNSGYVSDYELQDLFKEASLPLPGYKVREIVEKILSVADSNKD GKISFEFVSLMQELKSKDISKTFRKIINKREGI
Host	Wheat Germ (in vitro)
Theoretical MW (kDa)	36.96
Interspecies Antigen Sequence	Mouse (98)
Preparation Method	in vitro wheat germ expression system
Purification	Glutathione Sepharose 4 Fast Flow
Quality Control Testing	12.5% SDS-PAGE Stained with Coomassie Blue.
Storage Buffer	50 mM Tris-HCl, 10 mM reduced Glutathione, pH=8.0 in the elution buffer.
Storage Instruction	Store at -80°C. Aliquot to avoid repeated freezing and thawing.
Note	Best use within three months from the date of receipt of this protein.

Applications

- Enzyme-linked Immunoabsorbent Assay
- Western Blot (Recombinant protein)
- Antibody Production
- Protein Array

Gene Info — PLS1

Entrez GeneID [5357](#)

GeneBank Accession# [NM_002670](#)

Protein Accession# [NP_002661.1](#)

Gene Name PLS1

Gene Alias I-PLASTIN

Gene Description plastin 1 (I isoform)

Omim ID [602734](#)

Gene Ontology [Hyperlink](#)

Gene Summary Plastins are a family of actin-binding proteins that are conserved throughout eukaryote evolution and expressed in most tissues of higher eukaryotes. In humans, two ubiquitous plastin isoforms (L and T) have been identified. The protein encoded by this gene is a third distinct plastin isoform, which is specifically expressed at high levels in the small intestine. Alternatively spliced transcript variants varying in the 5' UTR, but encoding the same protein, have been found for this gene. [provided by RefSeq]

Other Designations I isoform|Plastin-1|plastin 1

Disease

- [Kidney Failure](#)