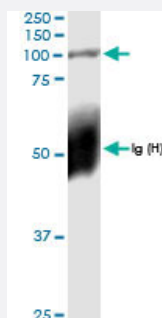


PLOD2 (Human) IP-WB Antibody Pair

Catalog # H00005352-PW1

Size 1 Set

Applications



Immunoprecipitation of PLOD2 transfected lysate using rabbit polyclonal anti-PLOD2 and Protein A Magnetic Bead ([U0007](#)), and immunoblotted with rabbit polyclonal anti-PLOD2.

Specification

Product Description	This IP-WB antibody pair set comes with one antibody for immunoprecipitation and another to detect the precipitated protein in western blot.
Reactivity	Human
Interspecies Antigen Sequence	Mouse (90%); Rat (90%)
Quality Control Testing	Immunoprecipitation-Western Blot (IP-WB) Immunoprecipitation of PLOD2 transfected lysate using rabbit polyclonal anti-PLOD2 and Protein A Magnetic Bead (U0007), and immunoblotted with rabbit polyclonal anti-PLOD2.
Supplied Product	Antibody pair set content: 1. Antibody pair for IP: rabbit polyclonal anti-PLOD2 (300 ul) 2. Antibody pair for WB: rabbit polyclonal anti-PLOD2 (50 ul)
Storage Instruction	Store reagents of the antibody pair set at -20°C or lower. Please aliquot to avoid repeated freeze thaw cycle. Reagents should be returned to -20°C storage immediately after use.

Applications

- Immunoprecipitation-Western Blot

[Protocol Download](#)

Gene Info — PLOD2

Entrez GeneID [5352](#)

Gene Name PLOD2

Gene Alias LH2, TLH

Gene Description procollagen-lysine, 2-oxoglutarate 5-dioxygenase 2

Omim ID [601865 609220](#)

Gene Ontology [Hyperlink](#)

Gene Summary The protein encoded by this gene is a membrane-bound homodimeric enzyme that is localized to the cisternae of the rough endoplasmic reticulum. The enzyme (cofactors iron and ascorbate) catalyzes the hydroxylation of lysyl residues in collagen-like peptides. The resultant hydroxylysyl groups are attachment sites for carbohydrates in collagen and thus are critical for the stability of intermolecular crosslinks. Some patients with Ehlers-Danlos syndrome type VIB have deficiencies in lysyl hydroxylase activity. Mutations in the coding region of this gene are associated with Bruck syndrome. Alternative splicing results in multiple transcript variants encoding different isoforms. [provided by RefSeq]

Other Designations lysine hydroxylase 2|lysyl hydroxylase 2|telopeptide lysyl hydroxylase

Pathway

- [Lysine degradation](#)

Disease

- [Cardiovascular Diseases](#)
- [Diabetes Mellitus](#)
- [Edema](#)
- [Genetic Predisposition to Disease](#)
- [Ovarian Neoplasms](#)