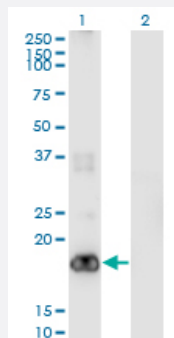


PIGH monoclonal antibody (M01), clone 2F8

Catalog # H00005283-M01

Size 100 ug

Applications

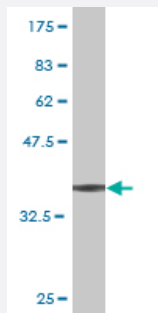


Western Blot (Transfected lysate)

Western Blot analysis of PIGH expression in transfected 293T cell line by PIGH monoclonal antibody (M01), clone 2F8.

Lane 1: PIGH transfected lysate (Predicted MW: 21.1 KDa).

Lane 2: Non-transfected lysate.



Western Blot detection against Immunogen (36.74 KDa) .

Specification

Product Description	Mouse monoclonal antibody raised against a partial recombinant PIGH.
Immunogen	PIGH (NP_004560, 89 a.a. ~ 188 a.a) partial recombinant protein with GST tag. MW of the GST tag alone is 26 KDa.
Sequence	TLLIIDSLGIQMTSSYASGKESTTFIEMGKVKDVI NEAYMQKVYYLCILLKDPVEPHGISQVVPVFQS AKPRLDCLIEVYRSCQEILAHQKATSTSP
Host	Mouse
Reactivity	Human

Interspecies Antigen Sequence	Mouse (91); Rat (93)
Isotype	IgG2a Kappa
Quality Control Testing	Antibody Reactive Against Recombinant Protein. Western Blot detection against Immunogen (36.74 KDa) .
Storage Buffer	In 1x PBS, pH 7.4
Storage Instruction	Store at -20°C or lower. Aliquot to avoid repeated freezing and thawing.

Applications

- Western Blot (Transfected lysate)

Western Blot analysis of PIGH expression in transfected 293T cell line by PIGH monoclonal antibody (M01), clone 2F8.

Lane 1: PIGH transfected lysate (Predicted MW: 21.1 KDa).

Lane 2: Non-transfected lysate.

[Protocol Download](#)

- Western Blot (Recombinant protein)

[Protocol Download](#)

- ELISA

Gene Info — PIGH

Entrez GeneID	5283
GeneBank Accession#	NM_004569
Protein Accession#	NP_004560
Gene Name	PIGH
Gene Alias	GPI-H
Gene Description	phosphatidylinositol glycan anchor biosynthesis, class H
Omim ID	600154
Gene Ontology	Hyperlink

Gene Summary

This gene encodes an endoplasmic reticulum associated protein that is involved in glycosylphosphatidylinositol (GPI)-anchor biosynthesis. The GPI anchor is a glycolipid found on many blood cells and which serves to anchor proteins to the cell surface. The protein encoded by this gene is a subunit of the GPI N-acetylglucosaminyl (GlcNAc) transferase that transfers GlcNAc to phosphatidylinositol (PI) on the cytoplasmic side of the endoplasmic reticulum. [provided by RefSeq]

Other Designations

phosphatidylinositol N-acetylglucosaminyltransferase subunit H|phosphatidylinositol glycan, class H|phosphatidylinositol-glycan biosynthesis, class H protein

Pathway

- [Glycosylphosphatidylinositol\(GPI\)-anchor biosynthesis](#)
- [Metabolic pathways](#)

Disease

- [Disease Progression](#)
- [Disease Susceptibility](#)
- [HIV Infections](#)