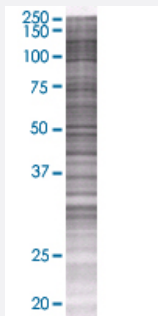


# SERPINI2 293T Cell Transient Overexpression Lysate(Denatured)

Catalog # H00005276-T02

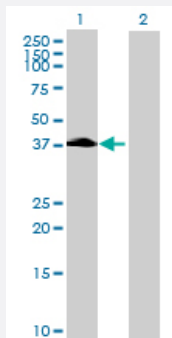
Size 100 uL

## Applications



### SDS-PAGE Gel

SERPINI2 transfected lysate.



### Western Blot

Lane 1: SERPINI2 transfected lysate ( 44.66 KDa)

Lane 2: Non-transfected lysate.

## Specification

|                               |                           |
|-------------------------------|---------------------------|
| Transfected Cell Line         | 293T                      |
| Plasmid                       | pCMV-SERPINI2 full-length |
| Host                          | Human                     |
| Theoretical MW (kDa)          | 44.66                     |
| Interspecies Antigen Sequence | Mouse (76); Rat (76)      |

**Quality Control Testing**

Transient overexpression cell lysate was tested with Anti-SERPIN2 antibody ([H00005276-B02](#)) by Western Blots.  
SDS-PAGE Gel  
SERPIN2 transfected lysate.  
Western Blot  
Lane 1: SERPIN2 transfected lysate ( 44.66 KDa)  
Lane 2: Non-transfected lysate.

**Storage Buffer**

1X Sample Buffer (50 mM Tris-HCl, 2% SDS, 10% glycerol, 300 mM 2-mercaptoethanol, 0.01% Bromophenol blue)

**Storage Instruction**

Store at -80°C. Aliquot to avoid repeated freezing and thawing.

## Applications

- Western Blot

## Gene Info — SERPIN2

**Entrez GeneID**[5276](#)**GeneBank Accession#**[NM\\_006217.3](#)**Protein Accession#**[NP\\_006208.1](#)**Gene Name**

SERPIN2

**Gene Alias**

MEPI, PANCPIN, PI14, TSA2004

**Gene Description**

serpin peptidase inhibitor, clade I (pancpin), member 2

**Omim ID**[605587](#)**Gene Ontology**[Hyperlink](#)**Gene Summary**

The protein encoded by this gene is a member of the serine protease inhibitor (serpin) superfamily made up of proteins which play central roles in the regulation of a wide variety of physiological processes, including coagulation, fibrinolysis, development, malignancy and inflammation. The gene product may have a role in a growth-control, possibly growth-suppressing pathway and, when impaired, may be involved in pancreatic carcinogenesis. The protein is a member of the plasminogen activator inhibitor-1 family, a subset of the serpin superfamily whose members act as tissue-specific tPA inhibitors. Two alternatively spliced transcript variants encoding distinct protein isoforms have been found for this gene. [provided by RefSeq]

**Other Designations**

myoepithelium-derived serine protease inhibitor|protease inhibitor 14|serine (or cysteine) protein  
ase inhibitor, clade I (neuroserpin), member 2|serine (or cysteine) proteinase inhibitor, clade I (pa  
ncpin), member 2

---

**Disease**

- [Adenocarcinoma](#)
- [Esophageal Neoplasms](#)