

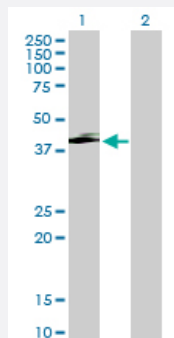
MaxPab®

SERPINI2 purified MaxPab mouse polyclonal antibody (B02P)

Catalog # H00005276-B02P

Size 50 ug

Applications



Western Blot (Transfected lysate)

Western Blot analysis of SERPINI2 expression in transfected 293T cell line ([H00005276-T02](#)) by SERPINI2 MaxPab polyclonal antibody.

Lane1: SERPINI2 transfected lysate (44.55 kDa).

Lane2: Non-transfected lysate.

Specification

Product Description	Mouse polyclonal antibody raised against a full-length human SERPINI2 protein.
Immunogen	SERPINI2 (NP_006208.1, 1 a.a. ~ 405 a.a) full-length human protein.
Sequence	MDTIFLWSLLLLFFGSQASRCSAQKNTFAVDLYQEVSLSHKDNIIIFSPLGITLVLEMVQLGAKGKA QQQIRQTLKQQETSAGEEFFVLKSFFSAISEKKQEFTFNLANALYLQEGFTVKEQYLHGNKEFFQS AIKLVDVFQDAKACAEMISTWVERKTDGKIKDMFSGEEFGPLTRLVLVNAMFKGDWKQKFRKEDT QLINFTKKNGSTVKIPMMKALLRTKYGYFSESSLNYQVLELSYKGDEFSLIILPAEGMDIEEVEKLITA QQILKWLSEMQEEVEISLPRFKVEQKVDFKDVLYSLNITEIFSGGCDLSGITDSSEVYVSQVTQKV FFEINEDGSEAATSTGIHIPVIMSLAQSQFIANHPFLFIMKHNPTEILFMGRVTNPDTQEIKGRDLDS L
Host	Mouse
Reactivity	Human
Interspecies Antigen Sequence	Mouse (76); Rat (76)
Quality Control Testing	Antibody reactive against mammalian transfected lysate.
Storage Buffer	In 1x PBS, pH 7.4

Storage Instruction

Store at -20°C or lower. Aliquot to avoid repeated freezing and thawing.

Applications

- Western Blot (Transfected lysate)

Western Blot analysis of SERPINI2 expression in transfected 293T cell line ([H00005276-T02](#)) by SERPINI2 MaxPab polyclonal antibody.

Lane1:SERPINI2 transfected lysate(44.55 KDa).

Lane2:Non-transfected lysate.

[Protocol Download](#)

Gene Info — SERPINI2

Entrez GeneID [5276](#)

GeneBank Accession# [NM_006217.3](#)

Protein Accession# [NP_006208.1](#)

Gene Name SERPINI2

Gene Alias MEPI, PANCPIN, PI14, TSA2004

Gene Description serpin peptidase inhibitor, clade I (pancpin), member 2

Omim ID [605587](#)

Gene Ontology [Hyperlink](#)

Gene Summary The protein encoded by this gene is a member of the serine protease inhibitor (serpin) superfamily made up of proteins which play central roles in the regulation of a wide variety of physiological processes, including coagulation, fibrinolysis, development, malignancy and inflammation. The gene product may have a role in a growth-control, possibly growth-suppressing pathway and, when impaired, may be involved in pancreatic carcinogenesis. The protein is a member of the plasminogen activator inhibitor-1 family, a subset of the serpin superfamily whose members act as tissue-specific tPA inhibitors. Two alternatively spliced transcript variants encoding distinct protein isoforms have been found for this gene. [provided by RefSeq]

Other Designations myoepithelium-derived serine protease inhibitor|protease inhibitor 14|serine (or cysteine) proteinase inhibitor, clade I (neuroserpin), member 2|serine (or cysteine) proteinase inhibitor, clade I (pancpin), member 2

Disease

- [Adenocarcinoma](#)
- [Esophageal Neoplasms](#)