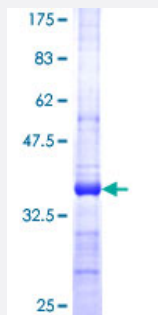


# SERPINB9 (Human) Recombinant Protein (Q01)

Catalog # H00005272-Q01

Size 25 ug, 10 ug

## Applications



## Specification

<b>Product Description</b>	Human SERPINB9 partial ORF ( NP_004146, 279 a.a. - 375 a.a.) recombinant protein with GST-tag at N-terminal.
<b>Sequence</b>	DMESVLRHLGMDAFQQGKADLSAMSAERDLCLSKFVHKSFVEVNEEGTEAAAASSCFVVAEC CMESGPRFCADHPFLFFIRHNRANSILFCGRFSS
<b>Host</b>	Wheat Germ (in vitro)
<b>Theoretical MW (kDa)</b>	36.41
<b>Interspecies Antigen Sequence</b>	Mouse (72); Rat (74)
<b>Preparation Method</b>	<a href="#">in vitro wheat germ expression system</a>
<b>Purification</b>	Glutathione Sepharose 4 Fast Flow
<b>Quality Control Testing</b>	12.5% SDS-PAGE Stained with Coomassie Blue.
<b>Storage Buffer</b>	50 mM Tris-HCl, 10 mM reduced Glutathione, pH=8.0 in the elution buffer.
<b>Storage Instruction</b>	Store at -80°C. Aliquot to avoid repeated freezing and thawing.
<b>Note</b>	Best use within three months from the date of receipt of this protein.

## Applications

- Enzyme-linked Immunoabsorbent Assay
- Western Blot (Recombinant protein)
- Antibody Production
- Protein Array

## Gene Info — SERPINB9

Entrez GeneID [5272](#)

GeneBank Accession# [NM\\_004155](#)

Protein Accession# [NP\\_004146](#)

Gene Name SERPINB9

Gene Alias CAP-3, CAP3, PI9

Gene Description serpin peptidase inhibitor, clade B (ovalbumin), member 9

Omim ID [601799](#)

Gene Ontology [Hyperlink](#)

**Gene Summary** PI9 belongs to the large superfamily of serine proteinase inhibitors (serpins), which bind to and in activate serine proteinases. These interactions are involved in many cellular processes, including coagulation, fibrinolysis, complement fixation, matrix remodeling, and apoptosis (Sprecher et al., 1995 [PubMed 8530382]).[supplied by OMIM]

**Other Designations** OTTHUMP00000015954|protease inhibitor 9 (ovalbumin type)|serine (or cysteine) proteinase inhibitor, clade B (ovalbumin), member 9