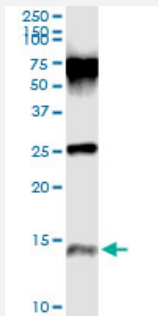


PI3 (Human) IP-WB Antibody Pair

Catalog # H00005266-PW1

Size 1 Set

Applications



Immunoprecipitation of PI3 transfected lysate using mouse monoclonal anti-PI3 and Protein A Magnetic Bead ([U0007](#)), and immunoblotted with mouse monoclonal anti-PI3.

Specification

Product Description	This IP-WB antibody pair set comes with one antibody for immunoprecipitation and another to detect the precipitated protein in western blot.
Reactivity	Human
Quality Control Testing	Immunoprecipitation-Western Blot (IP-WB) Immunoprecipitation of PI3 transfected lysate using mouse monoclonal anti-PI3 and Protein A Magnetic Bead (U0007), and immunoblotted with mouse monoclonal anti-PI3.
Supplied Product	Antibody pair set content: 1. Antibody pair for IP: mouse monoclonal anti-PI3 (300 ug) 2. Antibody pair for WB: mouse monoclonal anti-PI3 (50 ug)
Storage Instruction	Store reagents of the antibody pair set at -20°C or lower. Please aliquot to avoid repeated freeze thaw cycle. Reagents should be returned to -20°C storage immediately after use.

Applications

- Immunoprecipitation-Western Blot

[Protocol Download](#)

Gene Info — PI3

Entrez GeneID [5266](#)**Gene Name** PI3**Gene Alias** ESI, MGC13613, SKALP, WAP3, WFDC14, cementoin**Gene Description** peptidase inhibitor 3, skin-derived**Omim ID** [182257](#)**Gene Ontology** [Hyperlink](#)

Gene Summary This gene encodes an elastase-specific inhibitor that functions as an antimicrobial peptide against Gram-positive and Gram-negative bacteria. The protein contains a WAP-type four-disulfide core (WFDC) domain, and is thus a member of the WFDC domain family. Most WFDC gene members are localized to chromosome 20q12-q13 in two clusters: centromeric and telomeric. This gene belongs to the centromeric cluster. Expression of this gene is upregulated by bacterial lipopolysaccharides and cytokines. [provided by RefSeq]

Other Designations OTTHUMP00000031100|WAP four-disulfide core domain 14|elafin|elastase-specific inhibitor|protease inhibitor 3, skin-derived (SKALP)|skin-derived antileukoproteinase

Disease

- [Genetic Predisposition to Disease](#)
- [Liver Cirrhosis](#)
- [Respiratory Distress Syndrome](#)