

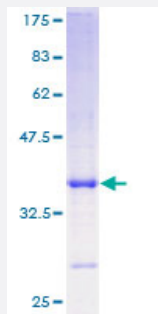
Full-Length

PI3 (Human) Recombinant Protein (P01)

Catalog # H00005266-P01

Size 10 ug, 25 ug

Applications



Specification

Product Description	Human PI3 full-length ORF (AAH10952, 1 a.a. - 117 a.a.) recombinant protein with GST-tag at N-terminal.
Sequence	MRASSFLMVVFLIAGTLVLEAAVTGVPVKGQDTVKG RVPFNGQDPVKGQVS VKGQDKVKAQEP VKGPVSTKPGSCP IILIRCAMLNPPNRCLKDTDCPGIKKCEGSCGMACFVPQ
Host	Wheat Germ (in vitro)
Theoretical MW (kDa)	38.61
Preparation Method	in vitro wheat germ expression system
Purification	Glutathione Sepharose 4 Fast Flow
Quality Control Testing	12.5% SDS-PAGE Stained with Coomassie Blue.
Storage Buffer	50 mM Tris-HCl, 10 mM reduced Glutathione, pH=8.0 in the elution buffer.
Storage Instruction	Store at -80°C. Aliquot to avoid repeated freezing and thawing.
Note	Best use within three months from the date of receipt of this protein.

Applications

- Enzyme-linked Immunoabsorbent Assay
- Western Blot (Recombinant protein)
- Antibody Production
- Protein Array

Gene Info — PI3

Entrez GeneID	5266
GeneBank Accession#	BC010952
Protein Accession#	AAH10952
Gene Name	PI3
Gene Alias	ESI, MGC13613, SKALP, WAP3, WFDC14, cementoin
Gene Description	peptidase inhibitor 3, skin-derived
Omim ID	182257
Gene Ontology	Hyperlink
Gene Summary	This gene encodes an elastase-specific inhibitor that functions as an antimicrobial peptide against Gram-positive and Gram-negative bacteria. The protein contains a WAP-type four-disulfide core (WFDC) domain, and is thus a member of the WFDC domain family. Most WFDC gene members are localized to chromosome 20q12-q13 in two clusters: centromeric and telomeric. This gene belongs to the centromeric cluster. Expression of this gene is upregulated by bacterial lipopolysaccharides and cytokines. [provided by RefSeq]
Other Designations	OTTHUMP00000031100 WAP four-disulfide core domain 14 elafin elastase-specific inhibitor protease inhibitor 3, skin-derived (SKALP) skin-derived antileukoproteinase

Disease

- [Genetic Predisposition to Disease](#)

- [Liver Cirrhosis](#)
- [Respiratory Distress Syndrome](#)