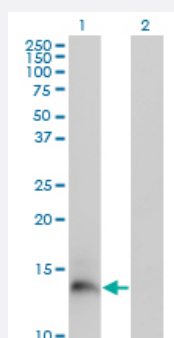


PI3 monoclonal antibody (M02), clone 2G20

Catalog # H00005266-M02

Size 100 ug

Applications

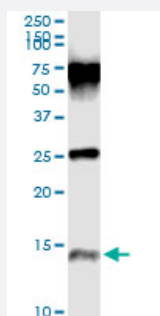


Western Blot (Transfected lysate)

Western Blot analysis of PI3 expression in transfected 293T cell line by PI3 monoclonal antibody (M02), clone 2G20.

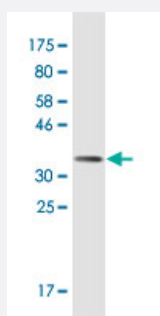
Lane 1: PI3 transfected lysate (Predicted MW: 12.3 KDa).

Lane 2: Non-transfected lysate.



Immunoprecipitation

Immunoprecipitation of PI3 transfected lysate using anti-PI3 monoclonal antibody and Protein A Magnetic Bead, and immunoblotted with PI3 monoclonal antibody.



Western Blot detection against Immunogen (38.61 KDa) .

Specification

Product Description

Mouse monoclonal antibody raised against a full-length recombinant PI3.

| | |
|--------------------------------|--------------------------------------------------------------------------------------------------------------------------|
| Immunogen | PI3 (AAH10952, 1 a.a. ~ 117 a.a) full-length recombinant protein with GST tag. MW of the GST tag alone is 26 KDa. |
| Sequence | MRASSFLIMVVFLIAGTLVLEAAVTGVPVKGQDTVKG RVPFNGQDPVKGQVSVKGGQDKVKAQEP VKGPVSTKPGSCPIILRCAMLNPPNRCLKDTCPGIKKCEGSCGMACFVPQ |
| Host | Mouse |
| Reactivity | Human |
| Isotype | IgG2a Kappa |
| Quality Control Testing | Antibody Reactive Against Recombinant Protein. Western Blot detection against Immunogen (38.61 KDa) . |
| Storage Buffer | In 1x PBS, pH 7.4 |
| Storage Instruction | Store at -20°C or lower. Aliquot to avoid repeated freezing and thawing. |

Applications

- Western Blot (Transfected lysate)

Western Blot analysis of PI3 expression in transfected 293T cell line by PI3 monoclonal antibody (M02), clone 2G20.

Lane 1: PI3 transfected lysate (Predicted MW: 12.3 KDa).

Lane 2: Non-transfected lysate.

[Protocol Download](#)

- Western Blot (Recombinant protein)

[Protocol Download](#)

- Immunoprecipitation

Immunoprecipitation of PI3 transfected lysate using anti-PI3 monoclonal antibody and Protein A Magnetic Bead, and immunoblotted with PI3 monoclonal antibody.

[Protocol Download](#)

- ELISA

Gene Info — PI3

Entrez GeneID

[5266](#)

| | |
|---------------------|-------------------------------------------------------------------------------------------------------------------------------------------------------------------------------------------------------------------------------------------------------------------------------------------------------------------------------------------------------------------------------------------------------------------------------------------------------------------------------------------------------------------------------------|
| GeneBank Accession# | BC010952 |
| Protein Accession# | AAH10952 |
| Gene Name | PI3 |
| Gene Alias | ESI, MGC13613, SKALP, WAP3, WFDC14, cementoin |
| Gene Description | peptidase inhibitor 3, skin-derived |
| Omim ID | 182257 |
| Gene Ontology | Hyperlink |
| Gene Summary | This gene encodes an elastase-specific inhibitor that functions as an antimicrobial peptide against Gram-positive and Gram-negative bacteria. The protein contains a WAP-type four-disulfide core (WFDC) domain, and is thus a member of the WFDC domain family. Most WFDC gene members are localized to chromosome 20q12-q13 in two clusters: centromeric and telomeric. This gene belongs to the centromeric cluster. Expression of this gene is upregulated by bacterial lipopolysaccharides and cytokines. [provided by RefSeq] |
| Other Designations | OTTHUMP00000031100 WAP four-disulfide core domain 14 elafin elastase-specific inhibitor protease inhibitor 3, skin-derived (SKALP) skin-derived antileukoproteinase |

Disease

- [Genetic Predisposition to Disease](#)
- [Liver Cirrhosis](#)
- [Respiratory Distress Syndrome](#)