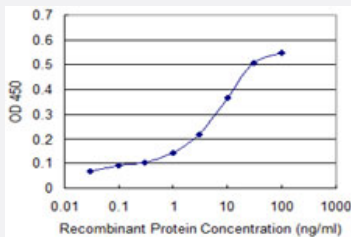


PI3 monoclonal antibody (M01), clone 3G9

Catalog # H00005266-M01

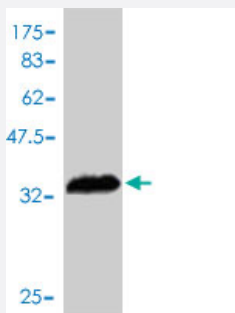
Size 100 ug

Applications



Sandwich ELISA (Recombinant protein)

Detection limit for recombinant GST tagged PI3 is approximately 0.1ng/ml as a capture antibody.



Western Blot detection against Immunogen (38.61 KDa) .

Specification

Product Description	Mouse monoclonal antibody raised against a full length recombinant PI3.
Immunogen	PI3 (AAH10952, 1 a.a. ~ 117 a.a) full-length recombinant protein with GST tag. MW of the GST tag alone is 26 KDa.
Sequence	MRASSFLMVVFLIAGTLVLEAAVTGVPVKGGQDTVKG RVPFNGQDPVKGQVSVKGGQDKVKAQEP VKGPVSTKPGSCPIILIRCAMLNPPNRCLKDTCPGIKKCCGSCGMACFVPQ
Host	Mouse
Reactivity	Human
Isotype	IgG1 kappa

Quality Control Testing	Antibody Reactive Against Recombinant Protein. Western Blot detection against Immunogen (38.61 KDa) .
Storage Buffer	In 1x PBS, pH 7.4
Storage Instruction	Store at -20°C or lower. Aliquot to avoid repeated freezing and thawing.

Applications

- Western Blot (Recombinant protein)

[Protocol Download](#)

- Sandwich ELISA (Recombinant protein)

Detection limit for recombinant GST tagged PI3 is approximately 0.1ng/ml as a capture antibody.

[Protocol Download](#)

- ELISA

Gene Info — PI3

Entrez GeneID	5266
GeneBank Accession#	BC010952
Protein Accession#	AAH10952
Gene Name	PI3
Gene Alias	ESI, MGC13613, SKALP, WAP3, WFDC14, cementoin
Gene Description	peptidase inhibitor 3, skin-derived
Omim ID	182257
Gene Ontology	Hyperlink

Gene Summary	This gene encodes an elastase-specific inhibitor that functions as an antimicrobial peptide against Gram-positive and Gram-negative bacteria. The protein contains a WAP-type four-disulfide core (WFDC) domain, and is thus a member of the WFDC domain family. Most WFDC gene members are localized to chromosome 20q12-q13 in two clusters: centromeric and telomeric. This gene belongs to the centromeric cluster. Expression of this gene is upregulated by bacterial lipopolysaccharides and cytokines. [provided by RefSeq]
--------------	---

Other Designations

OTTHUMP00000031100|WAP four-disulfide core domain 14|elafin|elastase-specific inhibitor|protease inhibitor 3, skin-derived (SKALP)|skin-derived antileukoproteinase

Disease

- [Genetic Predisposition to Disease](#)
- [Liver Cirrhosis](#)
- [Respiratory Distress Syndrome](#)