

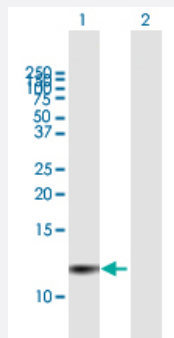
MaxPab®

PI3 purified MaxPab mouse polyclonal antibody (B01P)

Catalog # H00005266-B01P

Size 50 ug

Applications



Western Blot (Transfected lysate)

Western Blot analysis of PI3 expression in transfected 293T cell line ([H00005266-T01](#)) by PI3 MaxPab polyclonal antibody.

Lane 1: PI3 transfected lysate(12.87 KDa).

Lane 2: Non-transfected lysate.

Specification

Product Description	Mouse polyclonal antibody raised against a full-length human PI3 protein.
Immunogen	PI3 (NP_002629.1, 1 a.a. ~ 117 a.a) full-length human protein.
Sequence	MRASSFLMVVFLIAGTLVLEAAVTGVPVKGQDTVKGKRVFPNGQDPVKGQVSVKGQDKVKAQEP VKGPVSTKPGSCPIILIRCAMLNPPNRCLKDTCPGIKKCEGSCGMACFVPQ
Host	Mouse
Reactivity	Human
Quality Control Testing	Antibody reactive against mammalian transfected lysate.
Storage Buffer	In 1x PBS, pH 7.4
Storage Instruction	Store at -20°C or lower. Aliquot to avoid repeated freezing and thawing.

Applications

- Western Blot (Transfected lysate)

Western Blot analysis of PI3 expression in transfected 293T cell line ([H00005266-T01](#)) by PI3 MaxPab polyclonal antibody.

Lane 1: PI3 transfected lysate(12.87 KDa).

Lane 2: Non-transfected lysate.

[Protocol Download](#)

Gene Info — PI3

Entrez GeneID [5266](#)

GeneBank Accession# [NM_002638.2](#)

Protein Accession# [NP_002629.1](#)

Gene Name PI3

Gene Alias ESI, MGC13613, SKALP, WAP3, WFDC14, cementoin

Gene Description peptidase inhibitor 3, skin-derived

Omim ID [182257](#)

Gene Ontology [Hyperlink](#)

Gene Summary This gene encodes an elastase-specific inhibitor that functions as an antimicrobial peptide against Gram-positive and Gram-negative bacteria. The protein contains a WAP-type four-disulfide core (WFDC) domain, and is thus a member of the WFDC domain family. Most WFDC gene members are localized to chromosome 20q12-q13 in two clusters: centromeric and telomeric. This gene belongs to the centromeric cluster. Expression of this gene is upregulated by bacterial lipopolysaccharides and cytokines. [provided by RefSeq]

Other Designations OTTHUMP00000031100|WAP four-disulfide core domain 14|elafin|elastase-specific inhibitor|protease inhibitor 3, skin-derived (SKALP)|skin-derived antileukoproteinase

Disease

- [Genetic Predisposition to Disease](#)
- [Liver Cirrhosis](#)
- [Respiratory Distress Syndrome](#)