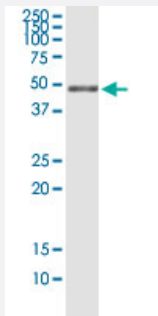


# PHKG2 (Human) IP-WB Antibody Pair

Catalog # H00005261-PW2

Size 1 Set

## Applications



Immunoprecipitation of PHKG2 transfected lysate using rabbit polyclonal anti-PHKG2 and Protein A Magnetic Bead ([U0007](#)), and immunoblotted with mouse purified polyclonal anti-PHKG2.

## Specification

<b>Product Description</b>	This IP-WB antibody pair set comes with one antibody for immunoprecipitation and another to detect the precipitated protein in western blot.
<b>Reactivity</b>	Human
<b>Quality Control Testing</b>	Immunoprecipitation-Western Blot (IP-WB) Immunoprecipitation of PHKG2 transfected lysate using rabbit polyclonal anti-PHKG2 and Protein A Magnetic Bead ( <a href="#">U0007</a> ), and immunoblotted with mouse purified polyclonal anti-PHKG2.
<b>Supplied Product</b>	Antibody pair set content: 1. Antibody pair for IP: rabbit polyclonal anti-PHKG2 (300 ul) 2. Antibody pair for WB: mouse purified polyclonal anti-PHKG2 (50 ug)
<b>Storage Instruction</b>	Store reagents of the antibody pair set at -20°C or lower. Please aliquot to avoid repeated freeze thaw cycle. Reagents should be returned to -20°C storage immediately after use.

## Applications

- Immunoprecipitation-Western Blot

[Protocol Download](#)

## Gene Info — PHKG2

Entrez GeneID	<a href="#">5261</a>
Gene Name	PHKG2
Gene Alias	GSD9C
Gene Description	phosphorylase kinase, gamma 2 (testis)
Omim ID	<a href="#">172471</a>
Gene Ontology	<a href="#">Hyperlink</a>
Gene Summary	O
Other Designations	Phosphorylase kinase, gamma 2 (testis/liver)

## Pathway

- [Calcium signaling pathway](#)
- [Insulin signaling pathway](#)