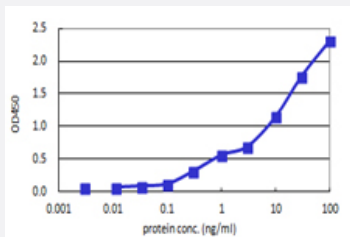


# PHKG2 (Human) Matched Antibody Pair

Catalog # H00005261-AP41

Size 1 Set

## Applications



Sandwich ELISA detection sensitivity ranging from 0.03 ng/ml to 100 ng/ml.

## Specification

<b>Product Description</b>	This antibody pair set comes with a matched antibody pair to detect and quantify the protein level of human PHKG2.
<b>Reactivity</b>	Human
<b>Quality Control Testing</b>	Standard curve using recombinant protein ( H00005261-P01 ) as an analyte. Sandwich ELISA detection sensitivity ranging from 0.03 ng/ml to 100 ng/ml.
<b>Supplied Product</b>	Antibody pair set content: 1. Capture antibody: mouse monoclonal anti-PHKG2, IgG2a Kappa (100 ug) 2. Detection antibody: biotinylated mouse monoclonal anti-PHKG2, IgG2a Lambda (50 ug) *Reagents are sufficient for at least 3-5 x 96 well plates using recommended protocols.
<b>Storage Instruction</b>	Store reagents of the antibody pair set at -20°C or lower. Please aliquot to avoid repeated freeze thaw cycle. Reagents should be returned to -20°C storage immediately after use.

## Applications

- ELISA Pair (Recombinant protein)

[Protocol Download](#)

## Gene Info — PHKG2

Entrez GeneID	<a href="#">5261</a>
Gene Name	PHKG2
Gene Alias	GSD9C
Gene Description	phosphorylase kinase, gamma 2 (testis)
Omim ID	<a href="#">172471</a>
Gene Ontology	<a href="#">Hyperlink</a>
Gene Summary	O
Other Designations	Phosphorylase kinase, gamma 2 (testis/liver)

## Pathway

- [Calcium signaling pathway](#)
- [Insulin signaling pathway](#)