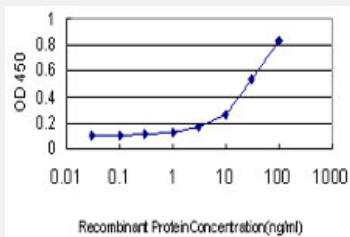


# PHKG1 monoclonal antibody (M01), clone 2G6

Catalog # H00005260-M01

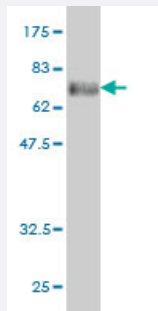
Size 100 ug

## Applications



### Sandwich ELISA (Recombinant protein)

Detection limit for recombinant GST tagged PHKG1 is approximately 1ng/ml as a capture antibody.



Western Blot detection against Immunogen (68.31 KDa) .

## Specification

### Product Description

Mouse monoclonal antibody raised against a full length recombinant PHKG1.

### Immunogen

PHKG1 (AAH51327, 1 a.a. ~ 387 a.a) full-length recombinant protein with GST tag. MW of the GST tag alone is 26 KDa.

### Sequence

MTRDEALPDSHSAQDFYENYEPKEILGRGVSSVVRRCIHKPTSQEYAVKVIDVTGGGSFSPEEVR  
ELREATLKEVDILRKVSGHPNIIQLKDTYETNTFFFLVFDLMKRGELFDYLTEKVTLSEKETRKIMRA  
LLEVICTLHKLNVHRDLKPENILLDDNMNIKLTDGFGSCQLEPGERLREVCGTPSYLAPEIIECSMN  
EDHPGYGKEVDMWSTGVIMYTLLAGSPPFWHRKQMLMLRMMSGNYQFGSPEWDDYSDTVKDL  
VSRFLVVQPQNRYTAEALAHPPFFQQYLVEEVVRFHSPRGKFKVIALTVLASVRIYYQYRRVKPVTR  
EMIRDPYALRPLRRLIDAYAFRIYGHWWKKGQQQNRAALFENTPKAVLLSLAEEDY

### Host

Mouse

Reactivity	Human
Interspecies Antigen Sequence	Mouse (94); Rat (94)
Isotype	IgG1 Kappa
Quality Control Testing	Antibody Reactive Against Recombinant Protein. Western Blot detection against Immunogen (68.31 KDa) .
Storage Buffer	In 1x PBS, pH 7.4
Storage Instruction	Store at -20°C or lower. Aliquot to avoid repeated freezing and thawing.

## Applications

- Western Blot (Recombinant protein)

[Protocol Download](#)

- Sandwich ELISA (Recombinant protein)

Detection limit for recombinant GST tagged PHKG1 is approximately 1ng/ml as a capture antibody.

[Protocol Download](#)

- ELISA

## Gene Info — PHKG1

Entrez GeneID	<a href="#">5260</a>
GeneBank Accession#	<a href="#">BC051327</a>
Protein Accession#	<a href="#">AAH51327</a>
Gene Name	PHKG1
Gene Alias	PHKG
Gene Description	phosphorylase kinase, gamma 1 (muscle)
Omim ID	<a href="#">172470</a>
Gene Ontology	<a href="#">Hyperlink</a>

**Gene Summary**

This gene is a member of the Ser/Thr protein kinase family and encodes a protein with one protein kinase domain and two calmodulin-binding domains. This protein is the catalytic member of a 16 subunit protein kinase complex which contains equimolar ratios of 4 subunit types. The complex is a crucial glycogenolytic regulatory enzyme. This gene has two pseudogenes at chromosome 7q11.21 and one at chromosome 11p11.12. [provided by RefSeq]

**Other Designations**

phosphorylase b kinase gamma catalytic chain, skeletal muscle isoform|phosphorylase kinase gamma subunit 1

## Pathway

- [Calcium signaling pathway](#)
- [Insulin signaling pathway](#)