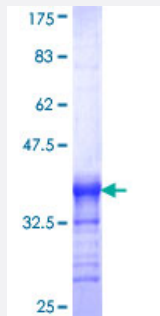


PHF2 (Human) Recombinant Protein (Q01)

Catalog # H00005253-Q01

Size 25 ug, 10 ug

Applications



Specification

Product Description	Human PHF2 partial ORF (NP_005383, 2 a.a. - 100 a.a.) recombinant protein with GST-tag at N-terminal.
Sequence	ATVPVYCVCLRPYDVTRFMIECDACKDWFHGSCVGVVEEEEAPDIDYHCPNCEKTHGKSTLKKKR TWHKHGPGQAPDVKPVQNGSQLFIKELRSRTFPS
Host	Wheat Germ (in vitro)
Theoretical MW (kDa)	36.63
Interspecies Antigen Sequence	Mouse (98); Rat (29)
Preparation Method	in vitro wheat germ expression system
Purification	Glutathione Sepharose 4 Fast Flow
Quality Control Testing	12.5% SDS-PAGE Stained with Coomassie Blue.
Storage Buffer	50 mM Tris-HCl, 10 mM reduced Glutathione, pH=8.0 in the elution buffer.
Storage Instruction	Store at -80°C. Aliquot to avoid repeated freezing and thawing.
Note	Best use within three months from the date of receipt of this protein.

Applications

- Enzyme-linked Immunoabsorbent Assay
- Western Blot (Recombinant protein)
- Antibody Production
- Protein Array

Gene Info — PHF2

Entrez GeneID [5253](#)

GeneBank Accession# [NM_005392](#)

Protein Accession# [NP_005383](#)

Gene Name PHF2

Gene Alias GRC5, JHDM1E, KIAA0662, MGC176680

Gene Description PHD finger protein 2

Omim ID [604351](#)

Gene Ontology [Hyperlink](#)

Gene Summary This gene encodes a protein which contains a zinc finger-like PHD (plant homeodomain) finger, distinct from other classes of zinc finger motifs, and a hydrophobic and highly conserved domain. The PHD finger shows the typical Cys4-His-Cys3 arrangement. PHD finger genes are thought to belong to a diverse group of transcriptional regulators possibly affecting eukaryotic gene expression by influencing chromatin structure. [provided by RefSeq]

Other Designations jumonji C domain-containing histone demethylase 1E

Disease

- [Tobacco Use Disorder](#)