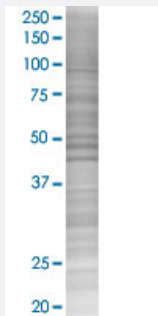


# SLC25A3 293T Cell Transient Overexpression Lysate(Denatured)

Catalog # H00005250-T03

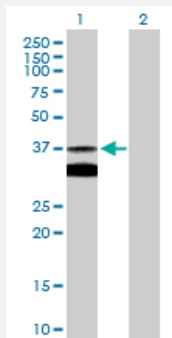
Size 100 uL

## Applications



### SDS-PAGE Gel

SLC25A3 transfected lysate.



### Western Blot

Lane 1: SLC25A3 transfected lysate ( 40.00 KDa)

Lane 2: Non-transfected lysate.

## Specification

Transfected Cell Line	293T
Plasmid	pCMV-SLC25A3 full-length
Host	Human
Theoretical MW (kDa)	40
Interspecies Antigen Sequence	Mouse (91); Rat (91)

**Quality Control Testing**

Transient overexpression cell lysate was tested with Anti-SLC25A3 antibody ([H00005250-B02P](#)) by Western Blots.  
SDS-PAGE Gel  
SLC25A3 transfected lysate.  
Western Blot  
Lane 1: SLC25A3 transfected lysate ( 40.00 KDa)  
Lane 2: Non-transfected lysate.

**Storage Buffer**

1X Sample Buffer (50 mM Tris-HCl, 2% SDS, 10% glycerol, 300 mM 2-mercaptoethanol, 0.01% Bromophenol blue)

**Storage Instruction**

Store at -80°C. Aliquot to avoid repeated freezing and thawing.

## Applications

- Western Blot

## Gene Info — SLC25A3

**Entrez GeneID**[5250](#)**GeneBank Accession#**[BC004345](#)**Protein Accession#**[NP\\_002626.1](#)**Gene Name**

SLC25A3

**Gene Alias**

OK/SW-cl.48, PHC

**Gene Description**

solute carrier family 25 (mitochondrial carrier; phosphate carrier), member 3

**Omim ID**[600370 610773](#)**Gene Ontology**[Hyperlink](#)**Gene Summary**

The protein encoded by this gene catalyzes the transport of phosphate into the mitochondrial matrix, either by proton cotransport or in exchange for hydroxyl ions. The protein contains three related segments arranged in tandem which are related to those found in other characterized members of the mitochondrial carrier family. Both the N-terminal and C-terminal regions of this protein protrude toward the cytosol. Multiple alternatively spliced transcript variants have been isolated. [provided by RefSeq]

**Other Designations**

mitochondrial carrier|mitochondrial phosphate carrier protein|phosphate carrier|solute carrier family 25 member 3