

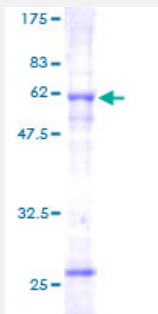
Full-Length

SLC25A3 (Human) Recombinant Protein (P01)

Catalog # H00005250-P01

Size 25 ug, 10 ug

Applications



Specification

Product Description

Human SLC25A3 full-length ORF (AAH00998, 1 a.a. - 361 a.a.) recombinant protein with GST-tag at N-terminal.

Sequence

MFSSVAHLARANPFNTPHLQLVHDGLGDLRSSSPGPTGQPRRPRNLAAAVEEYSCEFGSAKYY
ALCGFGGVLSCGLTHTAVVPLDLVKCRMQVDPQKYKGIFNGFSVTLKEDGVRGLAKGWAPTFLG
YSMQGLCKFGFYEVFKVLYSNMLGEENTYLWRTSLYLAASASAEFFADIALAPMEA AKVRIQTQP
GYANTLRDAAPKMYKEEGLKAFYKGVAPLWMRQIPYTM MKFACCERTVEALYKFVVPKPRSECS
KPEQLVVT FVAGYAGVFCAVSHPADSVVSVLNKEKGSSASLVLKRLGFKGVWKGLFARIIMIGTL
TALQWFIYDSVKVYFRLPRPPPEMPESLKKKLGLTQ

Host

Wheat Germ (in vitro)

Theoretical MW (kDa)

65.45

Interspecies Antigen Sequence

Mouse (91); Rat (91)

Preparation Method

[in vitro wheat germ expression system](#)

Purification

Glutathione Sepharose 4 Fast Flow

Quality Control Testing

12.5% SDS-PAGE Stained with Coomassie Blue.

Storage Buffer

50 mM Tris-HCl, 10 mM reduced Glutathione, pH=8.0 in the elution buffer.

Storage Instruction

Store at -80°C. Aliquot to avoid repeated freezing and thawing.

Note

Best use within three months from the date of receipt of this protein.

Applications

- Enzyme-linked Immunoabsorbent Assay
- Western Blot (Recombinant protein)
- Antibody Production
- Protein Array

Gene Info — SLC25A3

Entrez GeneID[5250](#)**GeneBank Accession#**[BC000998](#)**Protein Accession#**[AAH00998](#)**Gene Name**

SLC25A3

Gene Alias

OK/SW-cl.48, PHC

Gene Description

solute carrier family 25 (mitochondrial carrier; phosphate carrier), member 3

Omim ID[600370 610773](#)**Gene Ontology**[Hyperlink](#)**Gene Summary**

The protein encoded by this gene catalyzes the transport of phosphate into the mitochondrial matrix, either by proton cotransport or in exchange for hydroxyl ions. The protein contains three related segments arranged in tandem which are related to those found in other characterized members of the mitochondrial carrier family. Both the N-terminal and C-terminal regions of this protein protrude toward the cytosol. Multiple alternatively spliced transcript variants have been isolated. [provided by RefSeq]

Other Designations

mitochondrial carrier|mitochondrial phosphate carrier protein|phosphate carrier|solute carrier family 25 member 3