

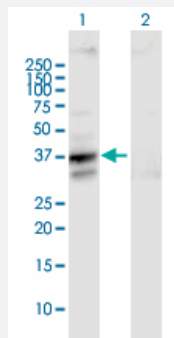
MaxPab®

# SLC25A3 purified MaxPab mouse polyclonal antibody (B02P)

Catalog # H00005250-B02P

Size 50 ug

## Applications

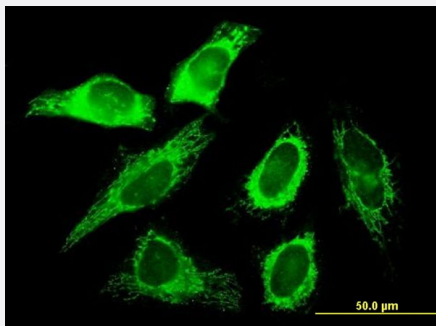


### Western Blot (Transfected lysate)

Western Blot analysis of SLC25A3 expression in transfected 293T cell line ([H00005250-T03](#)) by SLC25A3 MaxPab polyclonal antibody.

Lane 1: SLC25A3 transfected lysate(39.71 KDa).

Lane 2: Non-transfected lysate.



### Immunofluorescence

Immunofluorescence of purified MaxPab antibody to SLC25A3 on HeLa cell. [antibody concentration 10 ug/ml]

## Specification

### Product Description

Mouse polyclonal antibody raised against a full-length human SLC25A3 protein.

### Immunogen

SLC25A3 (NP\_002626.1, 1 a.a. ~ 361 a.a) full-length human protein.

### Sequence

MFSSVAHLARANPFNTPHLQLVHDGLGDLRSSSPGPTGQPRRPRNLAAAVEEYSCEFGSAKYY  
ALCGFGGVLSGLTHTAVVPLDLVKCRMQVDPQKYKGIFNGFSVTLKEDGVRGLAKGWAPTFLG  
YSMQGLCKFGFYEVFKVLYSNMLGEENTYLWRTSLYAASASAEFFADIALAPMEAAKVRIQTQP  
GYANTLRDAAPKMYKEEGLKAFYKGVAPLWMRQIPYTMKMFACFERTVEALYKFVVPKPRSECS  
KPEQLVVTFFVAGYIAGVFCAMVSHPADSVSVVLNKEKGSSASLVLKRLGFKGVWVKGLFARIIMIGTL  
TALQWFYDSVKVYFRLPRPPPEMPESLKKKLGLTQ

### Host

Mouse

Reactivity	Human
Interspecies Antigen Sequence	Mouse (91); Rat (91)
Quality Control Testing	Antibody reactive against mammalian transfected lysate.
Storage Buffer	In 1x PBS, pH 7.4
Storage Instruction	Store at -20°C or lower. Aliquot to avoid repeated freezing and thawing.

## Applications

- Western Blot (Transfected lysate)

Western Blot analysis of SLC25A3 expression in transfected 293T cell line ([H00005250-T03](#)) by SLC25A3 MaxPab polyclonal antibody.

Lane 1: SLC25A3 transfected lysate(39.71 KDa).

Lane 2: Non-transfected lysate.

[Protocol Download](#)

- Immunofluorescence

Immunofluorescence of purified MaxPab antibody to SLC25A3 on HeLa cell. [antibody concentration 10 ug/ml]

## Gene Info — SLC25A3

Entrez GeneID	<a href="#">5250</a>
GeneBank Accession#	<a href="#">BC004345</a>
Protein Accession#	<a href="#">NP_002626.1</a>
Gene Name	SLC25A3
Gene Alias	OK/SW-cl.48, PHC
Gene Description	solute carrier family 25 (mitochondrial carrier; phosphate carrier), member 3
Omim ID	<a href="#">600370 610773</a>
Gene Ontology	<a href="#">Hyperlink</a>

**Gene Summary**

The protein encoded by this gene catalyzes the transport of phosphate into the mitochondrial matrix, either by proton cotransport or in exchange for hydroxyl ions. The protein contains three related segments arranged in tandem which are related to those found in other characterized members of the mitochondrial carrier family. Both the N-terminal and C-terminal regions of this protein protrude toward the cytosol. Multiple alternatively spliced transcript variants have been isolated. [provided by RefSeq]

**Other Designations**

mitochondrial carrier|mitochondrial phosphate carrier protein|phosphate carrier|solute carrier family 25 member 3