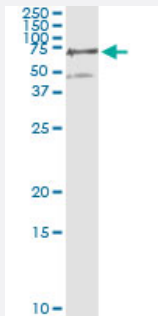


PGM3 (Human) IP-WB Antibody Pair

Catalog # H00005238-PW1

Size 1 Set

Applications



Immunoprecipitation of PGM3 transfected lysate using mouse monoclonal anti-PGM3 and Protein A Magnetic Bead ([U0007](#)), and immunoblotted with rabbit polyclonal anti-PGM3.

Specification

Product Description	This IP-WB antibody pair set comes with one antibody for immunoprecipitation and another to detect the precipitated protein in western blot.
Reactivity	Human
Quality Control Testing	Immunoprecipitation-Western Blot (IP-WB) Immunoprecipitation of PGM3 transfected lysate using mouse monoclonal anti-PGM3 and Protein A Magnetic Bead (U0007), and immunoblotted with rabbit polyclonal anti-PGM3.
Supplied Product	Antibody pair set content: 1. Antibody pair for IP: mouse monoclonal anti-PGM3 (300 ug) 2. Antibody pair for WB: rabbit polyclonal anti-PGM3 (50 ul)
Storage Instruction	Store reagents of the antibody pair set at -20°C or lower. Please aliquot to avoid repeated freeze thaw cycle. Reagents should be returned to -20°C storage immediately after use.

Applications

- Immunoprecipitation-Western Blot

[Protocol Download](#)

Gene Info — PGM3

Entrez GeneID	5238
Gene Name	PGM3
Gene Alias	AGM1, DKFZp434B187, PAGM
Gene Description	phosphoglucomutase 3
Omim ID	172100
Gene Ontology	Hyperlink
Other Designations	N-acetylglucosamine-phosphate mutase acetylglucosamine phosphomutase phosphoacetylglucosamine mutase

Pathway

- [Amino sugar and nucleotide sugar metabolism](#)

Disease

- [Diabetes Complications](#)
- [Genetic Predisposition to Disease](#)