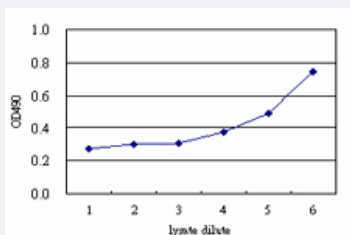


PGM3 (Human) Matched Antibody Pair

Catalog # H00005238-AP51

Size 1 Set

Applications



Sandwich ELISA detection sensitivity ranging from approximately 27x to 3x dilution of the PGM3 293T overexpression lysate (non-denatured).

Specification

Product Description	This antibody pair set comes with a matched antibody pair to detect and quantify the protein level of human PGM3.
Reactivity	Human
Quality Control Testing	Standard curve using PGM3 293T overexpression lysate (non-denatured) as an analyte. Sandwich ELISA detection sensitivity ranging from approximately 27x to 3x dilution of the PGM3 293 T overexpression lysate (non-denatured).
Supplied Product	Antibody pair set content: 1. Capture antibody: mouse monoclonal anti-PGM3 (100 ug) 2. Detection antibody: rabbit purified polyclonal anti-PGM3 (50 ug) *Reagents are sufficient for at least 3-5 x 96 well plates using recommended protocols.
Storage Instruction	Store reagents of the antibody pair set at -20°C or lower. Please aliquot to avoid repeated freeze thaw cycle. Reagents should be returned to -20°C storage immediately after use.

Applications

- ELISA Pair (Transfected lysate)

[Protocol Download](#)

Gene Info — PGM3

Entrez GeneID	5238
Gene Name	PGM3
Gene Alias	AGM1, DKFZp434B187, PAGM
Gene Description	phosphoglucomutase 3
Omim ID	172100
Gene Ontology	Hyperlink
Other Designations	N-acetylglucosamine-phosphate mutase acetylglucosamine phosphomutase phosphoacetylglucosamine mutase

Pathway

- [Amino sugar and nucleotide sugar metabolism](#)

Disease

- [Diabetes Complications](#)
- [Genetic Predisposition to Disease](#)