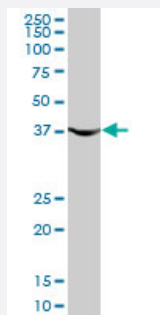


PGK1 monoclonal antibody (M02), clone 2H4

Catalog # H00005230-M02

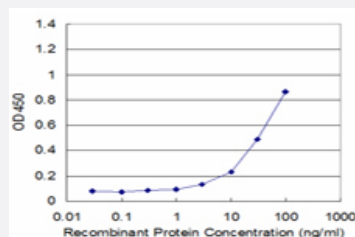
Size 100 ug

Applications



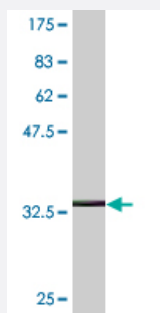
Western Blot (Cell lysate)

PGK1 monoclonal antibody (M02), clone 2H4. Western Blot analysis of PGK1 expression in HepG2 (Cat # L019V1).



Sandwich ELISA (Recombinant protein)

Detection limit for recombinant GST tagged PGK1 is approximately 3ng/ml as a capture antibody.



Western Blot detection against Immunogen (36.41 KDa) .

Specification

Product Description

Mouse monoclonal antibody raised against a partial recombinant PGK1.

Immunogen	PGK1 (NP_000282, 321 a.a. ~ 417 a.a) partial recombinant protein with GST tag. MW of the GST tag alone is 26 KDa.
Sequence	SKKYAEAVTRAKQMWNGPVGVFWEAFARGTKALMDEVVKATSRGCITIGGGDTATCCAKWNT EDKVSHVSTGGGASLELLEGKVLPGVDALSN
Host	Mouse
Reactivity	Human
Interspecies Antigen Sequence	Mouse (97); Rat (97)
Isotype	IgG2a Kappa
Quality Control Testing	Antibody Reactive Against Recombinant Protein. Western Blot detection against Immunogen (36.41 KDa) .
Storage Buffer	In 1x PBS, pH 7.4
Storage Instruction	Store at -20°C or lower. Aliquot to avoid repeated freezing and thawing.

Applications

- Western Blot (Cell lysate)

PGK1 monoclonal antibody (M02), clone 2H4. Western Blot analysis of PGK1 expression in HepG2 (Cat # L019V1).

[Protocol Download](#)

- Western Blot (Recombinant protein)

[Protocol Download](#)

- Sandwich ELISA (Recombinant protein)

Detection limit for recombinant GST tagged PGK1 is approximately 3ng/ml as a capture antibody.

[Protocol Download](#)

- ELISA

Gene Info — PGK1

Entrez GeneID [5230](#)

GeneBank Accession#	NM_000291
Protein Accession#	NP_000282
Gene Name	PGK1
Gene Alias	MGC117307, MGC142128, MGC8947, MIG10, PGKA
Gene Description	phosphoglycerate kinase 1
Omim ID	300653 311800
Gene Ontology	Hyperlink
Gene Summary	The protein encoded by this gene is a glycolytic enzyme that catalyzes the conversion of 1,3-diphosphoglycerate to 3-phosphoglycerate. The encoded protein may also act as a cofactor for polymerase alpha. This gene lies on the X-chromosome, while a related pseudogene also has been found on the X-chromosome and another on chromosome 19. [provided by RefSeq]
Other Designations	OTTHUMP00000023595 cell migration-inducing gene 10 protein primer recognition protein 2

Pathway

- [Biosynthesis of alkaloids derived from histidine and purine](#)
- [Biosynthesis of alkaloids derived from ornithine](#)
- [Biosynthesis of alkaloids derived from shikimate pathway](#)
- [Biosynthesis of alkaloids derived from terpenoid and polyketide](#)
- [Biosynthesis of phenylpropanoids](#)
- [Biosynthesis of plant hormones](#)
- [Biosynthesis of terpenoids and steroids](#)
- [Carbon fixation in photosynthetic organisms](#)
- [Glycolysis / Gluconeogenesis](#)
- [Metabolic pathways](#)

Disease

- [Genetic Predisposition to Disease](#)

- [Prostate cancer](#)
- [Prostatic Neoplasms](#)