

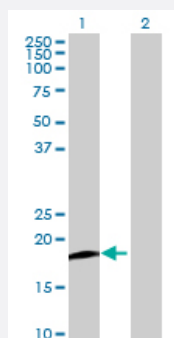
MaxPab®

## PFDN2 MaxPab mouse polyclonal antibody (B01P)

Catalog # H00005202-B01P

Size 50 ug

### Applications



#### Western Blot (Transfected lysate)

Western Blot analysis of PFDN2 expression in transfected 293T cell line ([H00005202-T01](#)) by PFDN2 MaxPab polyclonal antibody.

Lane 1: PFDN2 transfected lysate(16.94 KDa).

Lane 2: Non-transfected lysate.

### Specification

Product Description	Mouse polyclonal antibody raised against a full-length human PFDN2 protein.
Immunogen	PFDN2 (NP_036526, 1 a.a. ~ 154 a.a) full-length human protein.
Sequence	MAENSGRAGKSSGSGAGKGAVSAEQVIAGFNRLRQEQRGLASKAAELEMELNEHSLVIDTLKEV DETRKCYRMVGGVLVERTVKEVLPALENNKEQIQKIETLTQQLQAKGKELNEFREKHNIRLMGED EKPAAKENSEGAGAKASSAGVLVS
Host	Mouse
Reactivity	Human
Interspecies Antigen Sequence	Mouse (96); Rat (95)
Quality Control Testing	Antibody reactive against mammalian transfected lysate.
Storage Buffer	In 1x PBS, pH 7.4
Storage Instruction	Store at -20°C or lower. Aliquot to avoid repeated freezing and thawing.

## Applications

- Western Blot (Transfected lysate)

Western Blot analysis of PFDN2 expression in transfected 293T cell line ([H00005202-T01](#)) by PFDN2 MaxPab polyclonal antibody.

Lane 1: PFDN2 transfected lysate(16.94 KDa).

Lane 2: Non-transfected lysate.

[Protocol Download](#)

## Gene Info — PFDN2

Entrez GeneID	<a href="#">5202</a>
---------------	----------------------

GeneBank Accession#	<a href="#">NM_012394</a>
---------------------	---------------------------

Protein Accession#	<a href="#">NP_036526</a>
--------------------	---------------------------

Gene Name	PFDN2
-----------	-------

Gene Alias	PFD2
------------	------

Gene Description	prefoldin subunit 2
------------------	---------------------

Gene Ontology	<a href="#">Hyperlink</a>
---------------	---------------------------

Gene Summary	This gene encodes a member of the prefoldin beta subunit family. The encoded protein is one of six subunits of prefoldin, a molecular chaperone complex that binds and stabilizes newly synthesized polypeptides, thereby allowing them to fold correctly. The complex, consisting of two alpha and four beta subunits, forms a double beta barrel assembly with six protruding coiled-coils. [provided by RefSeq]
--------------	--

Other Designations	OTTHUMP00000029707 prefoldin 2
--------------------	--------------------------------