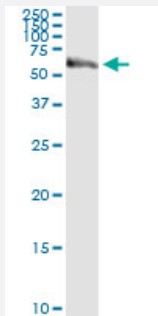


PEPD (Human) IP-WB Antibody Pair

Catalog # H00005184-PW1

Size 1 Set

Applications



Immunoprecipitation of PEPD transfected lysate using rabbit polyclonal anti-PEPD and Protein A Magnetic Bead ([U0007](#)), and immunoblotted with mouse purified polyclonal anti-PEPD.

Specification

Product Description	This IP-WB antibody pair set comes with one antibody for immunoprecipitation and another to detect the precipitated protein in western blot.
Reactivity	Human
Quality Control Testing	Immunoprecipitation-Western Blot (IP-WB) Immunoprecipitation of PEPD transfected lysate using rabbit polyclonal anti-PEPD and Protein A Magnetic Bead (U0007), and immunoblotted with mouse purified polyclonal anti-PEPD.
Supplied Product	Antibody pair set content: 1. Antibody pair for IP: rabbit polyclonal anti-PEPD (300 ul) 2. Antibody pair for WB: mouse purified polyclonal anti-PEPD (50 ug)
Storage Instruction	Store reagents of the antibody pair set at -20°C or lower. Please aliquot to avoid repeated freeze thaw cycle. Reagents should be returned to -20°C storage immediately after use.

Applications

- Immunoprecipitation-Western Blot

[Protocol Download](#)

Gene Info — PEPD

Entrez GeneID	5184
Gene Name	PEPD
Gene Alias	MGC10905, PROLIDASE
Gene Description	peptidase D
Omim ID	170100
Gene Ontology	Hyperlink
Gene Summary	Xaa-Pro dipeptidase is a cytosolic dipeptidase that hydrolyzes dipeptides with proline or hydroxy proline at the carboxy terminus (but not Pro-Pro). It is important in collagen metabolism because of the high levels of iminoacids. [provided by RefSeq]
Other Designations	imidodipeptidase proline dipeptidase

Disease

- [Diabetes Mellitus](#)
- [Genetic Predisposition to Disease](#)