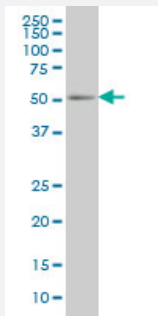


PEPD monoclonal antibody (M01), clone 1D5-H3

Catalog # H00005184-M01

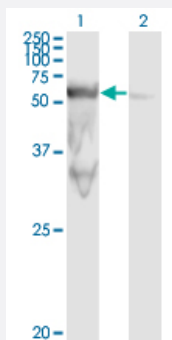
Size 100 ug

Applications



Western Blot (Cell lysate)

PEPD monoclonal antibody (M01), clone 1D5-H3 Western Blot analysis of PEPD expression in HepG2 (Cat # L019V1).

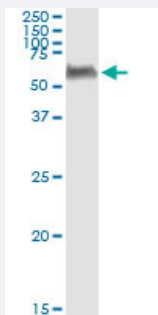


Western Blot (Transfected lysate)

Western Blot analysis of PEPD expression in transfected 293T cell line by PEPD monoclonal antibody (M01), clone 1D5-H3.

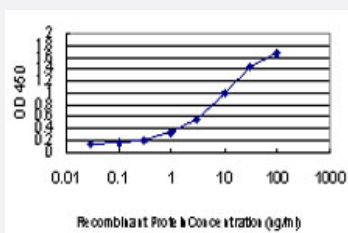
Lane 1: PEPD transfected lysate (Predicted MW: 54.6 KDa).

Lane 2: Non-transfected lysate.



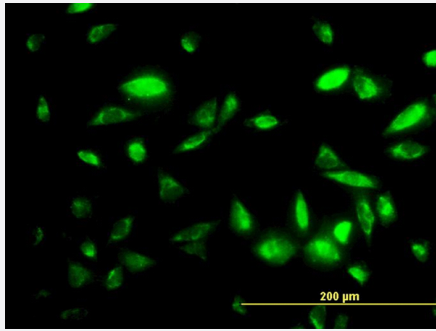
Immunoprecipitation

Immunoprecipitation of PEPD transfected lysate using anti-PEPD monoclonal antibody and Protein A Magnetic Bead, and immunoblotted with PEPD MaxPab rabbit polyclonal antibody.



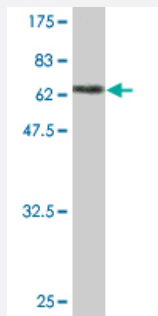
Sandwich ELISA (Recombinant protein)

Detection limit for recombinant GST tagged PEPD is approximately 0.1ng/ml as a capture antibody.



Immunofluorescence

Immunofluorescence of monoclonal antibody to PEPD on HepG2 cell. [antibody concentration 10 ug/ml]



Western Blot detection against Immunogen (79.97 KDa) .

Specification

Product Description	Mouse monoclonal antibody raised against a full length recombinant PEPD.
Immunogen	PEPD (AAH15027, 1 a.a. ~ 493 a.a) full-length recombinant protein with GST tag. MW of the GST tag alone is 26 KDa.
Sequence	MAAATGPSFWLGNETLKVPLALFALNRQLCERLRKNPVQAGSMVLQGGEETQRYCTDTGVL FRQESFFHWAFGVAEPGCYGVVDVTGKSTLFVPRLPASHATWMGKIHSKEHFKEKYAVDDVQY VDEIASVLTSQEPSVLLTLRGVNTDSGSVCREASFDGSKFEVNNTILHPEIVECRVFKTDMELEVL RYTNKISSEAHREVMKAVKVGMEYELESLFEHYCYSRGGMRHSSYTCICSGGENSAVLHYGHAG APNDRTIQNGDMCLFDMGGEYYCFASDITCSFPANGKFTADQKAVYEAVLRSSRAVMGAMKPGV WWPDMHRLADRIHLEELAHMGILSGSVDAMVQAHLGAVFMPHGLGHFLGIDVHDVGGYPEGVE RIDEPLRLRLRTARHLQPGMVLTVEPGIYIDHLLDEALADPARASFLNREVLQRFGRFGGVRIEED VVVTDSGIELLTCVPRTVEEIEACMAGCDKAFTPFSGPK
Host	Mouse
Reactivity	Human
Isotype	IgG1 Kappa
Quality Control Testing	Antibody Reactive Against Recombinant Protein. Western Blot detection against Immunogen (79.97 KDa) .
Storage Buffer	In 1x PBS, pH 7.4
Storage Instruction	Store at -20°C or lower. Aliquot to avoid repeated freezing and thawing.

Applications

- Western Blot (Cell lysate)

PEPD monoclonal antibody (M01), clone 1D5-H3 Western Blot analysis of PEPD expression in HepG2 (Cat # L019V1).

[Protocol Download](#)

- Western Blot (Transfected lysate)

Western Blot analysis of PEPD expression in transfected 293T cell line by PEPD monoclonal antibody (M01), clone 1D5-H3.

Lane 1: PEPD transfected lysate (Predicted MW: 54.6 KDa).

Lane 2: Non-transfected lysate.

[Protocol Download](#)

- Immunoprecipitation

Immunoprecipitation of PEPD transfected lysate using anti-PEPD monoclonal antibody and Protein A Magnetic Bead, and immunoblotted with PEPD MaxPab rabbit polyclonal antibody.

[Protocol Download](#)

- Sandwich ELISA (Recombinant protein)

Detection limit for recombinant GST tagged PEPD is approximately 0.1ng/ml as a capture antibody.

[Protocol Download](#)

- ELISA

- Immunofluorescence

Immunofluorescence of monoclonal antibody to PEPD on HepG2 cell. [antibody concentration 10 ug/ml]

Gene Info — PEPD

Entrez GeneID	5184
---------------	----------------------

GeneBank Accession#	BC015027
---------------------	--------------------------

Protein Accession#	AAH15027
--------------------	--------------------------

Gene Name	PEPD
-----------	------

Gene Alias	MGC10905, PROLIDASE
------------	---------------------

Gene Description	peptidase D
Omim ID	170100
Gene Ontology	Hyperlink
Gene Summary	Xaa-Pro dipeptidase is a cytosolic dipeptidase that hydrolyzes dipeptides with proline or hydroxy proline at the carboxy terminus (but not Pro-Pro). It is important in collagen metabolism because of the high levels of iminoacids. [provided by RefSeq]
Other Designations	imidodipeptidase proline dipeptidase

Disease

- [Diabetes Mellitus](#)
- [Genetic Predisposition to Disease](#)