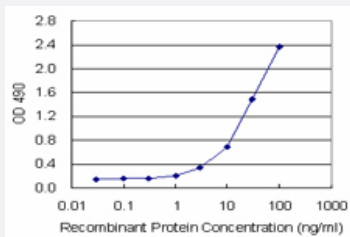


# PEPD (Human) Matched Antibody Pair

Catalog # H00005184-AP11

Size 1 Set

## Applications



Sandwich ELISA detection sensitivity ranging from 1 ng/ml to 100 ng/ml.

## Specification

<b>Product Description</b>	This antibody pair set comes with a matched antibody pair to detect and quantify the protein level of human PEPD.
<b>Reactivity</b>	Human
<b>Quality Control Testing</b>	Standard curve using recombinant protein ( H00005184-P01 ) as an analyte. Sandwich ELISA detection sensitivity ranging from 1 ng/ml to 100 ng/ml.
<b>Supplied Product</b>	Antibody pair set content: 1. Capture antibody: rabbit MaxPab® affinity purified polyclonal anti-PEPD (100 ug) 2. Detection antibody: mouse monoclonal anti-PEPD, IgG1 Kappa (20 ug) *Reagents are sufficient for at least 1-2 x 96 well plates using recommended protocols.
<b>Storage Instruction</b>	Store reagents of the antibody pair set at -20°C or lower. Please aliquot to avoid repeated freeze thaw cycle. Reagents should be returned to -20°C storage immediately after use.

## Applications

- ELISA Pair (Recombinant protein)

[Protocol Download](#)

## Gene Info — PEPD

Entrez GeneID	<a href="#">5184</a>
Gene Name	PEPD
Gene Alias	MGC10905, PROLIDASE
Gene Description	peptidase D
Omim ID	<a href="#">170100</a>
Gene Ontology	<a href="#">Hyperlink</a>
Gene Summary	Xaa-Pro dipeptidase is a cytosolic dipeptidase that hydrolyzes dipeptides with proline or hydroxy proline at the carboxy terminus (but not Pro-Pro). It is important in collagen metabolism because of the high levels of iminoacids. [provided by RefSeq]
Other Designations	imidodipeptidase proline dipeptidase

## Disease

- [Diabetes Mellitus](#)
- [Genetic Predisposition to Disease](#)