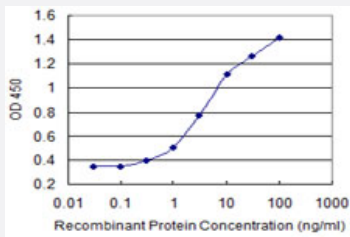


# ENPP3 monoclonal antibody (M01), clone 1G11

Catalog # H00005169-M01

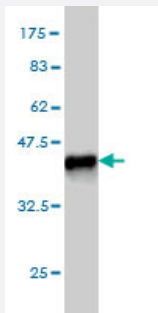
Size 100 ug

## Applications



### Sandwich ELISA (Recombinant protein)

Detection limit for recombinant GST tagged ENPP3 is 0.1 ng/ml as a capture antibody.



Western Blot detection against Immunogen (36.52 KDa) .

## Specification

<b>Product Description</b>	Mouse monoclonal antibody raised against a partial recombinant ENPP3.
<b>Immunogen</b>	ENPP3 (NP_005012, 602 a.a. ~ 699 a.a) partial recombinant protein with GST tag. MW of the GST tag alone is 26 KDa.
<b>Sequence</b>	ATVKVNLFPGRPRVLQKNVDHCLLYHREYVSGFGKAMRMPMWSSYTPQLGDTSLPPTVPDC LRADVRVPPSESQKCSFYLADKNITHGFLYPASN
<b>Host</b>	Mouse
<b>Reactivity</b>	Human

Interspecies Antigen Sequence	Mouse (87); Rat (89)
Isotype	IgG2a Kappa
Quality Control Testing	Antibody Reactive Against Recombinant Protein. Western Blot detection against Immunogen (36.52 KDa) .
Storage Buffer	In 1x PBS, pH 7.4
Storage Instruction	Store at -20°C or lower. Aliquot to avoid repeated freezing and thawing.

## Applications

- Western Blot (Recombinant protein)

[Protocol Download](#)

- Sandwich ELISA (Recombinant protein)

Detection limit for recombinant GST tagged ENPP3 is 0.1 ng/ml as a capture antibody.

[Protocol Download](#)

- ELISA

## Gene Info — ENPP3

Entrez GeneID	<a href="#">5169</a>
GeneBank Accession#	<a href="#">NM_005021</a>
Protein Accession#	<a href="#">NP_005012</a>
Gene Name	ENPP3
Gene Alias	B10, CD203c, NPP3, PD-IBETA, PDNP3
Gene Description	ectonucleotide pyrophosphatase/phosphodiesterase 3
Omim ID	<a href="#">602182</a>
Gene Ontology	<a href="#">Hyperlink</a>

**Gene Summary**

The protein encoded by this gene belongs to a series of ectoenzymes that are involved in hydrolysis of extracellular nucleotides. These ectoenzymes possess ATPase and ATP pyrophosphatase activities and are type II transmembrane proteins. Expression of the related rat mRNA has been found in a subset of immature glial cells and in the alimentary tract. The corresponding rat protein has been detected in the pancreas, small intestine, colon, and liver. The human mRNA is expressed in glioma cells, prostate, and uterus. Expression of the human protein has been detected in uterus, basophils, and mast cells. [provided by RefSeq]

**Other Designations**

OTTHUMP00000040272|dJ1005H11.3 (phosphodiesterase I/nucleotide pyrophosphatase 3)|dJ914N13.3 (phosphodiesterase I/nucleotide pyrophosphatase 3)|gp130RB13-6|phosphodiesterase I/nucleotide pyrophosphatase 3|phosphodiesterase-I beta

**Pathway**

- [Metabolic pathways](#)
- [Nicotinate and nicotinamide metabolism](#)
- [Pantothenate and CoA biosynthesis](#)
- [Purine metabolism](#)
- [Riboflavin metabolism](#)
- [Starch and sucrose metabolism](#)

**Disease**

- [Tobacco Use Disorder](#)