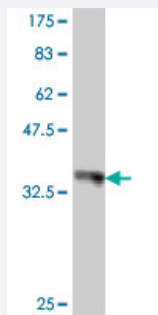


ENPP3 polyclonal antibody (A01)

Catalog # H00005169-A01

Size 50 uL

Applications



Western Blot detection against Immunogen (36.89 KDa) .

Specification

Product Description	Mouse polyclonal antibody raised against a partial recombinant ENPP3.
Immunogen	ENPP3 (NP_005012, 602 a.a. ~ 699 a.a) partial recombinant protein with GST tag.
Sequence	ATVKVNLFPFGRPRVLQKNVDHCLLYHREYVSGFGKAMRMPMWSSYTPQLGDTSLPPTVPDC LRADVVRPPSESQKCSFYLADKNITHGFLYPPASN
Host	Mouse
Reactivity	Human
Interspecies Antigen Sequence	Mouse (87); Rat (89)
Quality Control Testing	Antibody Reactive Against Recombinant Protein. Western Blot detection against Immunogen (36.89 KDa) .
Storage Buffer	50 % glycerol
Storage Instruction	Store at -20°C or lower. Aliquot to avoid repeated freezing and thawing.

Applications

- Western Blot (Recombinant protein)

[Protocol Download](#)

- ELISA

Gene Info — ENPP3

Entrez GeneID [5169](#)

GeneBank Accession# [NM_005021](#)

Protein Accession# [NP_005012](#)

Gene Name ENPP3

Gene Alias B10, CD203c, NPP3, PD-IBETA, PDNP3

Gene Description ectonucleotide pyrophosphatase/phosphodiesterase 3

Omim ID [602182](#)

Gene Ontology [Hyperlink](#)

Gene Summary The protein encoded by this gene belongs to a series of ectoenzymes that are involved in hydrolysis of extracellular nucleotides. These ectoenzymes possess ATPase and ATP pyrophosphatase activities and are type II transmembrane proteins. Expression of the related rat mRNA has been found in a subset of immature glial cells and in the alimentary tract. The corresponding rat protein has been detected in the pancreas, small intestine, colon, and liver. The human mRNA is expressed in glioma cells, prostate, and uterus. Expression of the human protein has been detected in uterus, basophils, and mast cells. [provided by RefSeq]

Other Designations OTTHUMP00000040272|dJ1005H11.3 (phosphodiesterase I/nucleotide pyrophosphatase 3)|dJ914N13.3 (phosphodiesterase I/nucleotide pyrophosphatase 3)|gp130RB13-6|phosphodiesterase I/nucleotide pyrophosphatase 3|phosphodiesterase-I beta

Pathway

- [Metabolic pathways](#)
- [Nicotinate and nicotinamide metabolism](#)
- [Pantothenate and CoA biosynthesis](#)
- [Purine metabolism](#)

- [Riboflavin metabolism](#)
- [Starch and sucrose metabolism](#)

Disease

- [Tobacco Use Disorder](#)