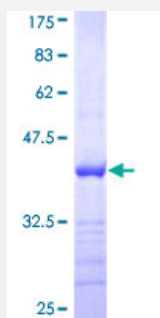


# PDGFA (Human) Recombinant Protein (Q01)

Catalog # H00005154-Q01

Size 10 ug, 25 ug

## Applications



## Specification

<b>Product Description</b>	Human PDGFA partial ORF ( NP_715639, 84 a.a. - 193 a.a.) recombinant protein with GST-tag at N-terminal.
<b>Sequence</b>	RKRSIEEAVPAVCKTRTVIYEIPRSQVDPTSANFLWPCCVEVKRCTGCCNTSSVKCQPSRVHHR SVKVAKVEYVRKKPKLKEVQVRLEEHLACACATTSLNPDYREEDT
<b>Host</b>	Wheat Germ (in vitro)
<b>Theoretical MW (kDa)</b>	37.84
<b>Preparation Method</b>	<a href="#">in vitro wheat germ expression system</a>
<b>Purification</b>	Glutathione Sepharose 4 Fast Flow
<b>Quality Control Testing</b>	12.5% SDS-PAGE Stained with Coomassie Blue.
<b>Storage Buffer</b>	50 mM Tris-HCl, 10 mM reduced Glutathione, pH=8.0 in the elution buffer.
<b>Storage Instruction</b>	Store at -80°C. Aliquot to avoid repeated freezing and thawing.
<b>Note</b>	Best use within three months from the date of receipt of this protein.

## Applications

- Enzyme-linked Immunoabsorbent Assay
- Western Blot (Recombinant protein)
- Antibody Production
- Protein Array

## Gene Info — PDGFA

Entrez GeneID [5154](#)

GeneBank Accession# [NM\\_033023](#)

Protein Accession# [NP\\_715639](#)

Gene Name PDGFA

Gene Alias PDGF-A, PDGF1

Gene Description platelet-derived growth factor alpha polypeptide

Omim ID [173430](#)

Gene Ontology [Hyperlink](#)

**Gene Summary** The protein encoded by this gene is a member of the platelet-derived growth factor family. The four members of this family are mitogenic factors for cells of mesenchymal origin and are characterized by a motif of eight cysteines. This gene product can exist either as a homodimer or as a heterodimer with the platelet-derived growth factor beta polypeptide, where the dimers are connected by disulfide bonds. Studies using knockout mice have shown cellular defects in oligodendrocytes, alveolar smooth muscle cells, and Leydig cells in the testis; knockout mice die either as embryos or shortly after birth. Two splice variants have been identified for this gene. [provided by RefSeq]

**Other Designations** PDGF A-chain|platelet-derived growth factor alpha|platelet-derived growth factor alpha chain|platelet-derived growth factor alpha isoform 2 preproprotein

## Pathway

- [Cytokine-cytokine receptor interaction](#)
- [Focal adhesion](#)

- [Gap junction](#)
- [Glioma](#)
- [MAPK signaling pathway](#)
- [Melanoma](#)
- [Pathways in cancer](#)
- [Prostate cancer](#)
- [Regulation of actin cytoskeleton](#)

## Disease

- [Asthma](#)
- [Coronary Artery Disease](#)
- [Genetic Predisposition to Disease](#)