

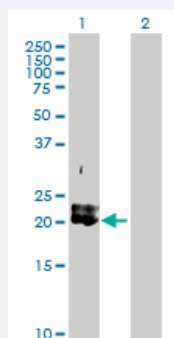
MaxPab®

## PDGFA purified MaxPab rabbit polyclonal antibody (D01P)

Catalog # H00005154-D01P

Size 100 ug

### Applications

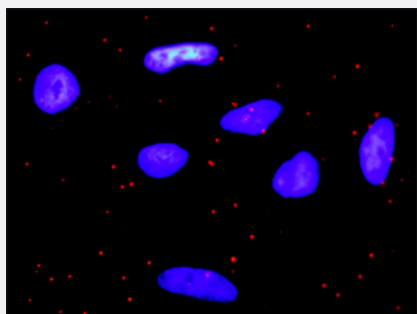


#### Western Blot (Transfected lysate)

Western Blot analysis of PDGFA expression in transfected 293T cell line ([H00005154-T01](#)) by PDGFA MaxPab polyclonal antibody.

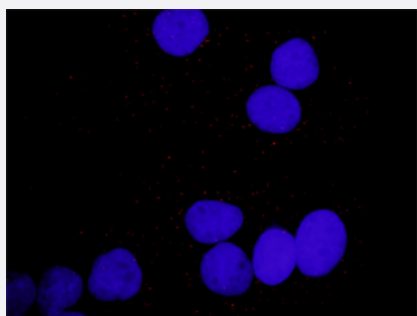
Lane 1: PDGFA transfected lysate(24.00 KDa).

Lane 2: Non-transfected lysate.



#### *In situ Proximity Ligation Assay (Cell)*

Proximity Ligation Analysis of protein-protein interactions between PDGFA and PDGFRA. HeLa cells were stained with anti-PDGFA rabbit purified polyclonal 1:1200 and anti-PDGFRA mouse monoclonal antibody 1:50. Each red dot represents the detection of protein-protein interaction complex, and nuclei were counterstained with DAPI (blue).



#### *In situ Proximity Ligation Assay (Cell)*

Proximity Ligation Analysis of protein-protein interactions between PDGFA and PLCG1. Huh7 cells were stained with anti-PDGFA rabbit purified polyclonal 1:1200 and anti-PLCG1 mouse monoclonal antibody 1:50. Each red dot represents the detection of protein-protein interaction complex, and nuclei were counterstained with DAPI (blue).

### Specification

#### Product Description

Rabbit polyclonal antibody raised against a full-length human PDGFA protein.

|                         |   |
|-------------------------|---|
| Immunogen               | PDGFA (NP_002598.4, 1 a.a. ~ 211 a.a) full-length human protein.  |
| Sequence                | MRTLACLLLLGCGYLAHVLAEEAEIPREVIERLARSQIHSIRDLQRLLIEDSVGSEDSLDTSRAHGV<br>HATKHVPEKRPLPIRRKRSIEEAVPAVCKTRTVIYEIPRSQVDPTSANFLWPPCVEVKRCTGCCNT<br>SSVKCQPSRVHHRSVKVAKVEYVRKKPKLKEVQVRLEEHLACACATTSLNPDYREEDTGRPRE<br>SGKKRKRKRLKPT |
| Host                    | Rabbit  |
| Reactivity              | Human   |
| Quality Control Testing | Antibody reactive against mammalian transfected lysate.   |
| Storage Buffer          | In 1x PBS, pH 7.4   |
| Storage Instruction     | Store at -20°C or lower. Aliquot to avoid repeated freezing and thawing.  |

## Applications

- Western Blot (Transfected lysate)

Western Blot analysis of PDGFA expression in transfected 293T cell line ([H00005154-T01](#)) by PDGFA MaxPab polyclonal antibody.

Lane 1: PDGFA transfected lysate(24.00 KDa).

Lane 2: Non-transfected lysate.

[Protocol Download](#)

- In situ* Proximity Ligation Assay (Cell)

Proximity Ligation Analysis of protein-protein interactions between PDGFA and PDGFRA. HeLa cells were stained with anti-PDGFA rabbit purified polyclonal 1:1200 and anti-PDGFR mouse monoclonal antibody 1:50. Each red dot represents the detection of protein-protein interaction complex, and nuclei were counterstained with DAPI (blue).

- In situ* Proximity Ligation Assay (Cell)

Proximity Ligation Analysis of protein-protein interactions between PDGFA and PLCG1. Huh7 cells were stained with anti-PDGFA rabbit purified polyclonal 1:1200 and anti-PLCG1 mouse monoclonal antibody 1:50. Each red dot represents the detection of protein-protein interaction complex, and nuclei were counterstained with DAPI (blue).

## Gene Info — PDGFA

|                     |                             |
|---------------------|-----------------------------|
| Entrez GeneID       | <a href="#">5154</a>        |
| GeneBank Accession# | <a href="#">NM_002607</a>   |
| Protein Accession#  | <a href="#">NP_002598.4</a> |

|                    |  |
|--------------------|--|
| Gene Name          | PDGFA  |
| Gene Alias         | PDGF-A, PDGF1  |
| Gene Description   | platelet-derived growth factor alpha polypeptide   |
| Omim ID            | <a href="#">173430</a>   |
| Gene Ontology      | <a href="#">Hyperlink</a>  |
| Gene Summary       | The protein encoded by this gene is a member of the platelet-derived growth factor family. The four members of this family are mitogenic factors for cells of mesenchymal origin and are characterized by a motif of eight cysteines. This gene product can exist either as a homodimer or as a heterodimer with the platelet-derived growth factor beta polypeptide, where the dimers are connected by disulfide bonds. Studies using knockout mice have shown cellular defects in oligodendrocytes, alveolar smooth muscle cells, and Leydig cells in the testis; knockout mice die either as embryos or shortly after birth. Two splice variants have been identified for this gene. [provided by RefSeq] |
| Other Designations | PDGF A-chain platelet-derived growth factor alpha platelet-derived growth factor alpha chain platelet-derived growth factor alpha isoform 2 preproprotein  |

## Pathway

- [Cytokine-cytokine receptor interaction](#)
- [Focal adhesion](#)
- [Gap junction](#)
- [Glioma](#)
- [MAPK signaling pathway](#)
- [Melanoma](#)
- [Pathways in cancer](#)
- [Prostate cancer](#)
- [Regulation of actin cytoskeleton](#)

## Disease

- [Asthma](#)
- [Coronary Artery Disease](#)

- [Genetic Predisposition to Disease](#)