

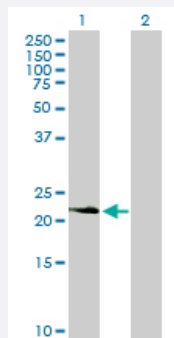
MaxPab®

# PDGFA purified MaxPab mouse polyclonal antibody (B01P)

Catalog # H00005154-B01P

Size 50 ug

## Applications



### Western Blot (Transfected lysate)

Western Blot analysis of PDGFA expression in transfected 293T cell line ([H00005154-T01](#)) by PDGFA MaxPab polyclonal antibody.

Lane 1: PDGFA transfected lysate(23.21 KDa).

Lane 2: Non-transfected lysate.

## Specification

### Product Description

Mouse polyclonal antibody raised against a full-length human PDGFA protein.

### Immunogen

PDGFA (NP\_002598.4, 1 a.a. ~ 211 a.a) full-length human protein.

### Sequence

MRTLACLLLLGCGYLAHVLAEEAEIPREVIERLARSQIHSIRDLQRLLEIDSVGSEDSLDTSRAHGV  
HATKHVPEKRPLPIRRKRSIEEAVPAVCKTRTVIYEIPRSQVDPTSANFLWPPCVEVKRCTGCCNT  
SSVKCQPSRVHHRSVKVAKVEYVRKKPKLKEVQVRLEEHLLECACATTSLNPDYREEDTGRPRE  
SGKKRKRKRLKPT

### Host

Mouse

### Reactivity

Human

### Quality Control Testing

Antibody reactive against mammalian transfected lysate.

### Storage Buffer

In 1x PBS, pH 7.4

### Storage Instruction

Store at -20°C or lower. Aliquot to avoid repeated freezing and thawing.

## Applications

- Western Blot (Transfected lysate)

Western Blot analysis of PDGFA expression in transfected 293T cell line ([H00005154-T01](#)) by PDGFA MaxPab polyclonal antibody.

Lane 1: PDGFA transfected lysate(23.21 KDa).

Lane 2: Non-transfected lysate.

[Protocol Download](#)

## Gene Info — PDGFA

Entrez GeneID [5154](#)

GeneBank Accession# [NM\\_002607](#)

Protein Accession# [NP\\_002598.4](#)

Gene Name PDGFA

Gene Alias PDGF-A, PDGF1

Gene Description platelet-derived growth factor alpha polypeptide

Omim ID [173430](#)

Gene Ontology [Hyperlink](#)

**Gene Summary** The protein encoded by this gene is a member of the platelet-derived growth factor family. The four members of this family are mitogenic factors for cells of mesenchymal origin and are characterized by a motif of eight cysteines. This gene product can exist either as a homodimer or as a heterodimer with the platelet-derived growth factor beta polypeptide, where the dimers are connected by disulfide bonds. Studies using knockout mice have shown cellular defects in oligodendrocytes, alveolar smooth muscle cells, and Leydig cells in the testis; knockout mice die either as embryos or shortly after birth. Two splice variants have been identified for this gene. [provided by RefSeq]

**Other Designations** PDGF A-chain|platelet-derived growth factor alpha|platelet-derived growth factor alpha chain|platelet-derived growth factor alpha isoform 2 preproprotein

## Pathway

- [Cytokine-cytokine receptor interaction](#)

- [Focal adhesion](#)
- [Gap junction](#)
- [Glioma](#)
- [MAPK signaling pathway](#)
- [Melanoma](#)
- [Pathways in cancer](#)
- [Prostate cancer](#)
- [Regulation of actin cytoskeleton](#)

## Disease

- [Asthma](#)
- [Coronary Artery Disease](#)
- [Genetic Predisposition to Disease](#)