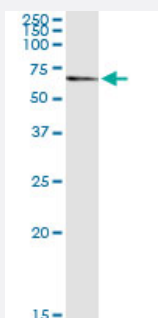


PDE9A (Human) IP-WB Antibody Pair

Catalog # H00005152-PW1

Size 1 Set

Applications



Immunoprecipitation of PDE9A transfected lysate using rabbit polyclonal anti-PDE9A and Protein A Magnetic Bead ([U0007](#)), and immunoblotted with mouse purified polyclonal anti-PDE9A.

Specification

Product Description	This IP-WB antibody pair set comes with one antibody for immunoprecipitation and another to detect the precipitated protein in western blot.
Reactivity	Human
Interspecies Antigen Sequence	Mouse (93%); Rat (92%)
Quality Control Testing	Immunoprecipitation-Western Blot (IP-WB) Immunoprecipitation of PDE9A transfected lysate using rabbit polyclonal anti-PDE9A and Protein A Magnetic Bead (U0007), and immunoblotted with mouse purified polyclonal anti-PDE9A.
Supplied Product	Antibody pair set content: 1. Antibody pair for IP: rabbit polyclonal anti-PDE9A (300 ul) 2. Antibody pair for WB: mouse purified polyclonal anti-PDE9A (50 ug)
Storage Instruction	Store reagents of the antibody pair set at -20°C or lower. Please aliquot to avoid repeated freeze thaw cycle. Reagents should be returned to -20°C storage immediately after use.

Applications

- Immunoprecipitation-Western Blot

[Protocol Download](#)

Gene Info — PDE9A

Entrez GeneID	5152
Gene Name	PDE9A
Gene Alias	HSPDE9A2
Gene Description	phosphodiesterase 9A
Omim ID	602973
Gene Ontology	Hyperlink
Gene Summary	The protein encoded by this gene catalyzes the hydrolysis of cAMP and cGMP to their corresponding monophosphates. The encoded protein plays a role in signal transduction by regulating the intracellular concentration of these cyclic nucleotides. Multiple transcript variants encoding several different isoforms have been found for this gene. [provided by RefSeq]
Other Designations	CGMP-specific 3',5'-cyclic phosphodiesterase type 9 OTTHUMP00000109390 OTTHUMP00000109391 OTTHUMP00000109393 OTTHUMP00000109394 OTTHUMP00000109397 OTTHUMP00000109399 OTTHUMP00000109400 phosphodiesterase PDE9A21

Pathway

- [Purine metabolism](#)

Disease

- [Depressive Disorder](#)
- [Genetic Predisposition to Disease](#)
- [Psychiatric Status Rating Scales](#)
- [Tobacco Use Disorder](#)